

Pressure balanced valve without diverter

SERIES SPECIFIC

36 900 660

Product version from 5/1/2024

- cover plate Ø 150 mm



|   |                                   |               |
|---|-----------------------------------|---------------|
|    | Platinum                          | 36 900 660-08 |
|    | Chrome                            | 36 900 660-00 |
|    | Brushed Platinum                  | 36 900 660-06 |
|    | Dark Chrome                       | 36 900 660-19 |
|    | Light Gold                        | 36 900 660-26 |
|    | Brushed Light Gold                | 36 900 660-27 |
|    | Brushed Durabronze<br>(23kt Gold) | 36 900 660-28 |
|    | Matte Black                       | 36 900 660-33 |
|    | Brushed Dark Brass                | 36 900 660-39 |
|   | Brushed Bronze                    | 36 900 660-42 |
|  | Brushed Champagne (22kt Gold)     | 36 900 660-46 |
|  | Champagne (22kt Gold)             | 36 900 660-47 |
|  | Brushed Chrome                    | 36 900 660-93 |
|  | Brushed Dark Platinum             | 36 900 660-99 |

Required miscellaneous



- Pressure balanced valve -

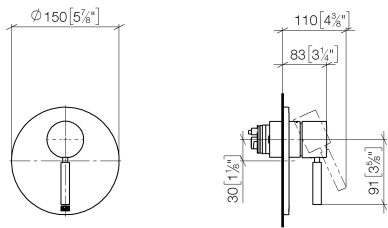
•min. recess depth 80 mm

•max. recess depth 105 mm

35 920 970 90

36 900 660 Product version from 5/1/2024

mm [inches]



Flow rate chart



Codes & Standards

ASME A112.18.1 cUPC



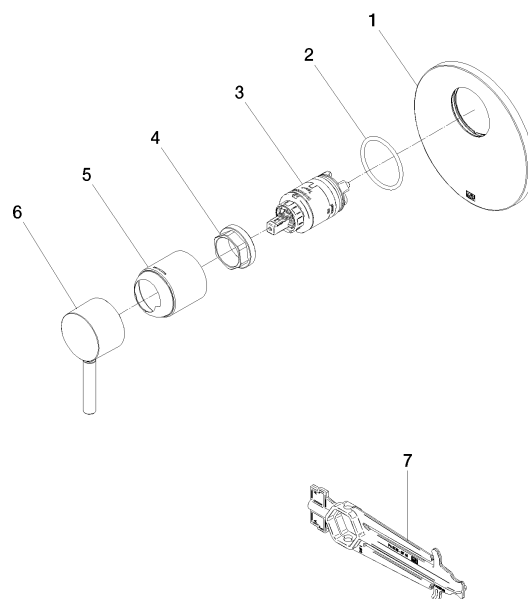
## Pressure balanced valve without diverter

SERIES SPECIFIC

36 900 660 Product version from 5/1/2024

Certificates and sustainability

IAPMO\_4976 (



## Spare parts list

| No. | Item Number        | Name      | Quantity used | Delivery time |
|-----|--------------------|-----------|---------------|---------------|
| 2   | 09 14 10 084 90    | seal      | 1.00          | 2             |
| 7   | 90 30 09 064 00 90 | key       | 1.00          | 2             |
| 6   | 09 11 02 260-08    | sleeve    | 1.00          | 40            |
| 1   | 09 11 02 262-08    | plate     | 1.00          | 40            |
| 4   | 09 24 04 448 90    | nut       | 1.00          | 2             |
| 5   | 90 20 66 004 00-08 | handle    | 1.00          | 40            |
| 3   | 90 15 05 069 00 90 | cartridge | 1.00          | 2             |