

Pressure balanced valve without diverter

SERIES SPECIFIC

36 900 660
Product version from 5/1/2024

- cover plate Ø 150 mm



	Brushed Bronze	36 900 660-42
	Chrome	36 900 660-00
	Brushed Platinum	36 900 660-06
	Platinum	36 900 660-08
	Dark Chrome	36 900 660-19
	Light Gold	36 900 660-26
	Brushed Light Gold	36 900 660-27
	Brushed Durabronze (23kt Gold)	36 900 660-28
	Matte Black	36 900 660-33
	Brushed Dark Bronze	36 900 660-39
	Brushed Champagne (22kt Gold)	36 900 660-46
	Champagne (22kt Gold)	36 900 660-47
	Brushed Chrome	36 900 660-93
	Brushed Dark Platinum	36 900 660-99

Required miscellaneous

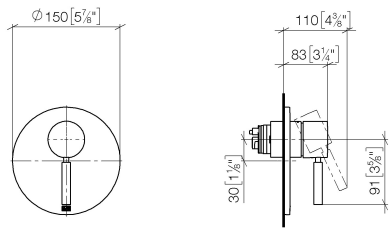


- Pressure balanced valve -
35 920 970 90

 - min. recess depth 80 mm
 - max. recess depth 105 mm

36 900 660 Product version from 5/1/2024

mm [inches]



Flow rate chart



Codes & Standards

ASME A112.18.1 cUPC



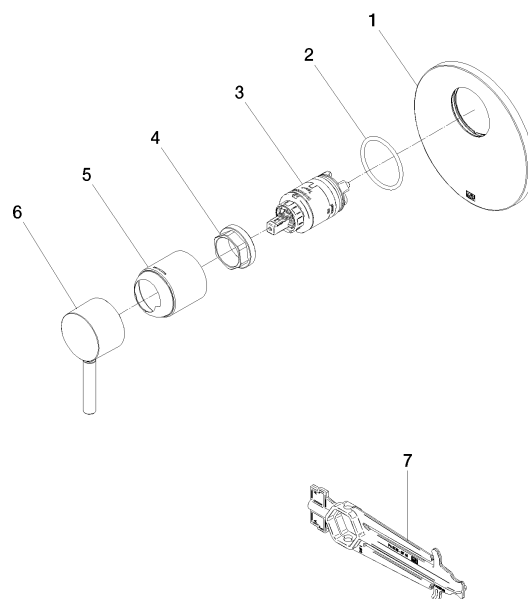
Pressure balanced valve without diverter

SERIES SPECIFIC

36 900 660 Product version from 5/1/2024

Certificates and sustainability

IAPMO_4976 (



Spare parts list

No.	Item Number	Name	Quantity used	Delivery time
2	09 14 10 084 90	seal	1.00	2
6	09 11 02 260-42	sleeve	1.00	30
7	90 30 09 064 00 90	key	1.00	2
1	09 11 02 262-42	plate	1.00	30
4	09 24 04 448 90	nut	1.00	2
3	90 15 05 069 00 90	cartridge	1.00	2
5	90 20 66 004 00-42	handle	1.00	30