

Pressure balanced valve without diverter

SERIES SPECIFIC

36 900 670 Product version from 5/1/2024



- cover plate 90 x 150 mm

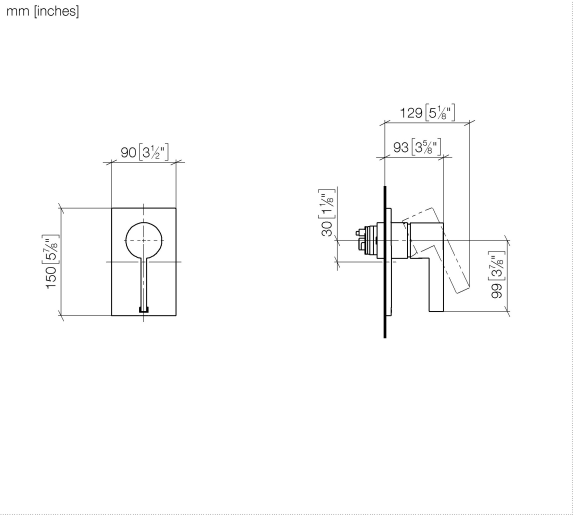
	Chrome	36 900 670-00
	Brushed Platinum	36 900 670-06
	Platinum	36 900 670-08
	Dark Chrome	36 900 670-19
	Brushed Light Gold	36 900 670-27
	Brushed Durabrass (23kt Gold)	36 900 670-28
	Matte Black	36 900 670-33
	Brushed Champagne (22kt Gold)	36 900 670-46
	Champagne (22kt Gold)	36 900 670-47
	Brushed Chrome	36 900 670-93
	Brushed Dark Platinum	36 900 670-99

Required miscellaneous



- Pressure balanced valve -** 35 920 970 90
- min. recess depth 80 mm
 - max. recess depth 105 mm

mm [inches]



Flow rate chart



Codes & Standards

ASME A112.18.1

cUPC



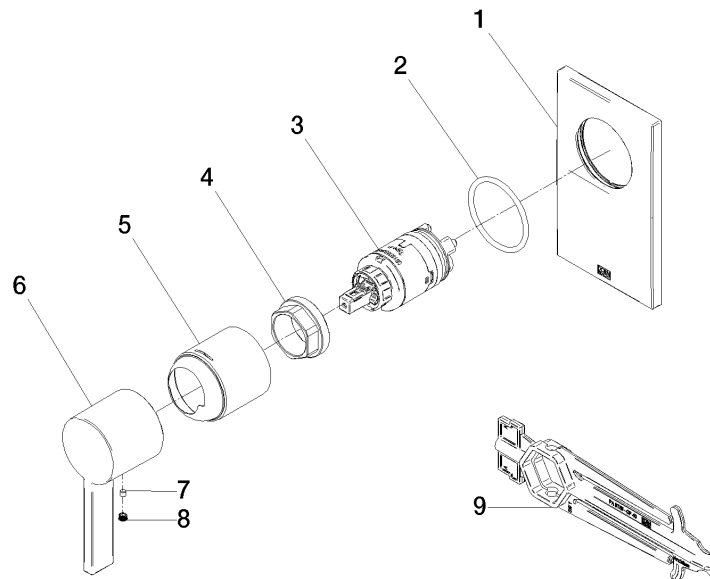
Pressure balanced valve without diverter

SERIES SPECIFIC

36 900 670 Product version from 5/1/2024

Certificates and sustainability

IAPMO_4976 (



Spare parts list

No.	Item Number	Name	Quantity used	Delivery time
5	09 11 02 260-00	sleeve	1.00	10
7	09 31 11 099 90	pin	1.00	2
2	09 14 10 084 90	seal	1.00	2
8	90 31 20 109 00 90	plug	1.00	2
9	90 30 09 064 00 90	key	1.00	2
6	09 20 67 007-00	handle	1.00	10
3	90 15 05 069 00 90	cartridge	1.00	2
4	09 24 04 448 90	nut	1.00	2
1	09 11 02 257-00	plate	1.00	10