

Pressure balanced valve with diverter

SERIES SPECIFIC

36 915 660

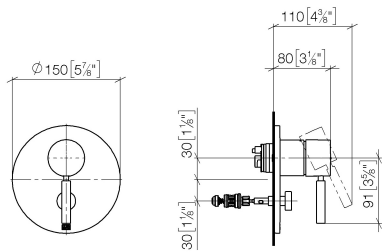


- automatic diverter
- cover plate Ø 150 mm

| | | |
|---|-------------------------------|---------------|
|  | Brushed Dark Brass | 36 915 660-39 |
|  | Chrome | 36 915 660-00 |
|  | Brushed Platinum | 36 915 660-06 |
|  | Platinum | 36 915 660-08 |
|  | Dark Chrome | 36 915 660-19 |
|  | Light Gold | 36 915 660-26 |
|  | Brushed Light Gold | 36 915 660-27 |
|  | Brushed Durabrass (23kt Gold) | 36 915 660-28 |
|  | Matte Black | 36 915 660-33 |
|  | Brushed Bronze | 36 915 660-42 |
|  | Brushed Champagne (22kt Gold) | 36 915 660-46 |
|  | Champagne (22kt Gold) | 36 915 660-47 |
|  | Brushed Chrome | 36 915 660-93 |
|  | Brushed Dark Platinum | 36 915 660-99 |

36 915 660

mm [inches]



Flow rate chart



36 915 660

Parts for other
finishes can be found
here: Chrome

