

Pressure balanced valve with diverter

VAIA

36 915 809
Product version from 5/1/2024



- automatic diverter
- cover plate Ø 150 mm

	Brushed Durabrass (23kt Gold)	36 915 809-28
	Chrome	36 915 809-00
	Brushed Platinum	36 915 809-06
	Platinum	36 915 809-08
	Dark Chrome	36 915 809-19
	Brushed Light Gold	36 915 809-27
	Brushed Dark Brass	36 915 809-39
	Brushed Bronze	36 915 809-42
	Brushed Champagne (22kt Gold)	36 915 809-46
	Champagne (22kt Gold)	36 915 809-47
	Brushed Dark Platinum	36 915 809-99

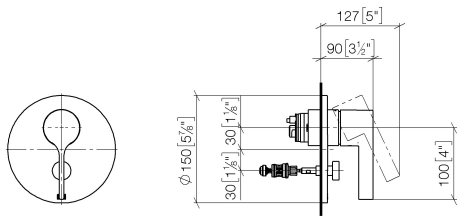
Required miscellaneous



- Pressure balanced valve -**
35 920 970 90

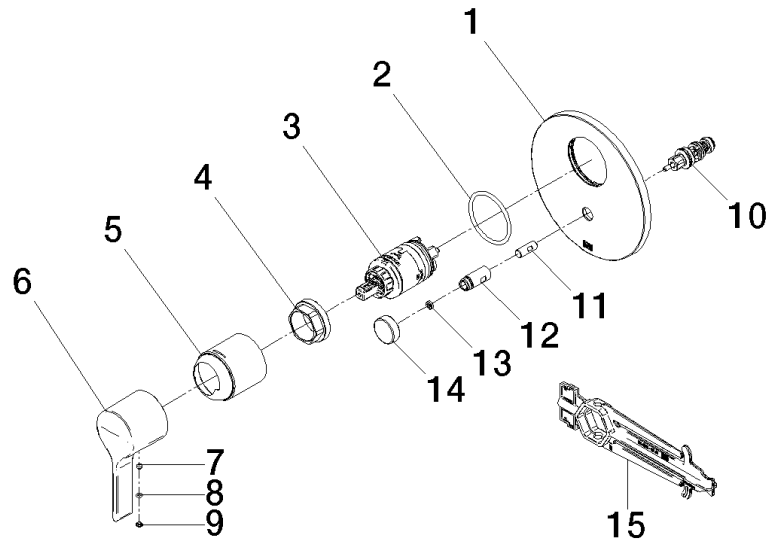
  - min. recess depth 80 mm
  - max. recess depth 105 mm

mm [inches]



Flow rate chart





## Spare parts list

No.	Item Number	Name	Quantity used	Delivery time
1	09 11 02 261-28	plate	1.00	20
7	90 31 11 063 00 90	pin	1.00	2
8	09 14 10 133 90	seal	1.00	2
2	09 14 10 084 90	seal	1.00	2
13	09 24 03 227 90	screw	1.00	2
3	90 15 05 069 00 90	cartridge	1.00	2
4	09 24 04 448 90	nut	1.00	2
5	09 11 02 260-28	sleeve	1.00	20
10	90 21 34 081 00 90	diverter	1.00	2
15	90 30 09 064 00 90	key	1.00	2
9	09 31 20 087-28	plug	1.00	20
6	09 20 80 023-28	handle	1.00	20
14	09 20 78 056-28	handle	1.00	20
11	09 24 03 226 90	adaptor	1.00	2
12	09 31 09 139-28	pull-rod	1.00	20