








Pressure balanced valve with diverter

36 915 845 Product version from 5/1/2024



- automatic diverter
- cover plate 90 x 150 mm

| | | |
|---|-----------------------|---------------|
|  | Brushed Platinum | 36 915 845-06 |
|  | Chrome | 36 915 845-00 |
|  | Dark Chrome | 36 915 845-19 |
|  | Brushed Light Gold | 36 915 845-27 |
|  | Matte Black | 36 915 845-33 |
|  | Brushed Chrome | 36 915 845-93 |
|  | Brushed Dark Platinum | 36 915 845-99 |

Required miscellaneous

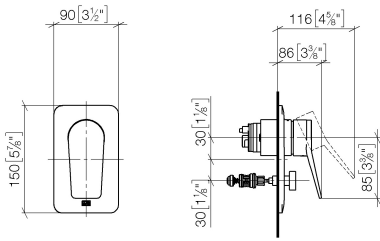


- Pressure balanced valve -** 35 920 970 90
- min. recess depth mm
 - max. recess depth mm

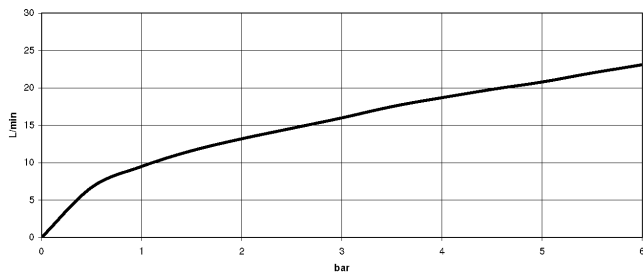
Pressure balanced valve with diverter

36 915 845 Product version from 5/1/2024

mm [inches]



Flow rate chart



Codes & Standards

ASME A112.18.1

cUPC



Pressure balanced valve with diverter

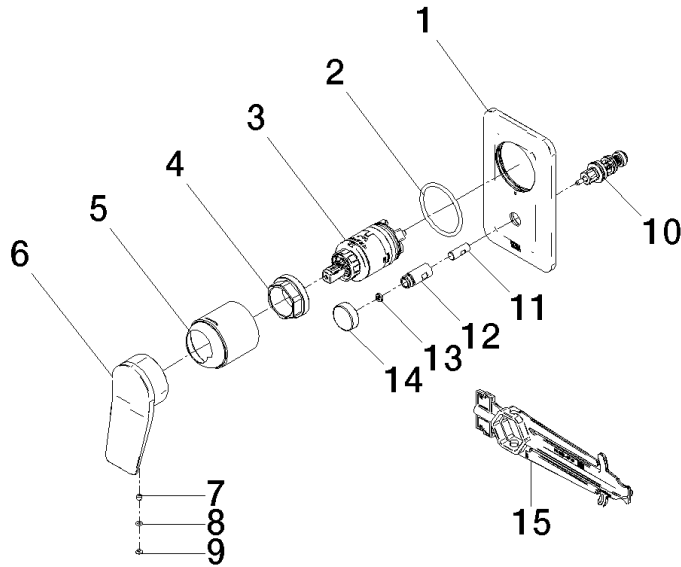
36 915 845 Product version from 5/1/2024

Certificates

IAPMO_4976 (

Pressure balanced valve with diverter

36 915 845 Product version from 5/1/2024



Spare parts list

| No. | Item Number | Name | Quantity used | Delivery time |
|-----|--------------------|-----------|---------------|---------------|
| 1 | 09 11 02 301-06 | plate | 1 | 10 |
| 2 | 09 14 10 084 90 | seal | 1 | 2 |
| 3 | 90 15 05 069 00 90 | cartridge | 1 | 2 |
| 4 | 09 24 04 448 90 | nut | 1 | 2 |
| 5 | 09 11 02 260-06 | sleeve | 1 | 10 |
| 6 | 09 20 84 022-06 | handle | 1 | 10 |
| 7 | 90 31 11 030 00 90 | pin | 1 | 2 |
| 8 | 09 14 10 133 90 | seal | 1 | 2 |
| 9 | 09 31 20 087-06 | plug | 1 | 10 |
| 10 | 90 21 34 081 00 90 | diverter | 1 | 2 |
| 11 | 09 24 03 226 90 | adaptor | 1 | 2 |
| 12 | 09 31 09 139-06 | pull-rod | 1 | 10 |
| 13 | 09 24 03 227 90 | screw | 1 | 2 |
| 14 | 09 20 78 056-06 | handle | 1 | 10 |
| 15 | 90 30 09 064 00 90 | key | 1 | 2 |