



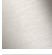




Pressure balanced valve with diverter

LISSE

36 915 845    Product version from 5/1/2024



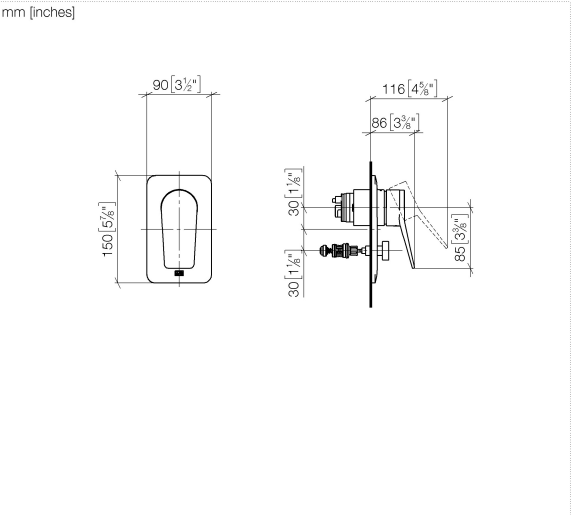
- automatic diverter
- cover plate 90 x 150 mm

	Matte Black	36 915 845-33
	Chrome	36 915 845-00
	Brushed Platinum	36 915 845-06
	Dark Chrome	36 915 845-19
	Brushed Light Gold	36 915 845-27
	Brushed Chrome	36 915 845-93
	Brushed Dark Platinum	36 915 845-99

Required miscellaneous



- Pressure balanced valve -**                      35 920 970 90
- min. recess depth 80 mm
  - max. recess depth 105 mm



Flow rate chart



Codes & Standards

ASME A112.18.1 cUPC



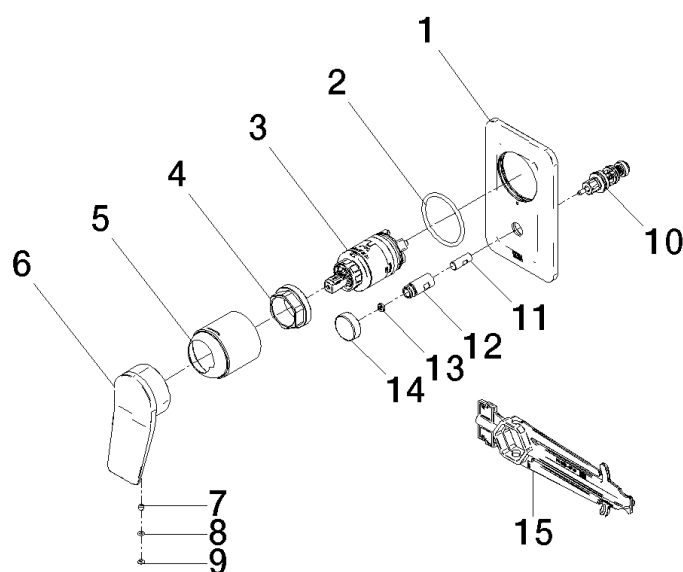
## Pressure balanced valve with diverter

LISSE

36 915 845 Product version from 5/1/2024

Certificates and sustainability

IAPMO\_4976 (



## Spare parts list

No.	Item Number	Name	Quantity used	Delivery time
	15 90 30 09 064 00 90	key	1.00	2
	14 09 20 78 056-33	handle	1.00	30
	6 09 20 84 022-33	handle	1.00	30
	13 09 24 03 227 90	screw	1.00	2
	7 90 31 11 030 00 90	pin	1.00	2
	3 90 15 05 069 00 90	cartridge	1.00	2
	8 09 14 10 133 90	seal	1.00	2
	1 09 11 02 301-33	plate	1.00	30
	4 09 24 04 448 90	nut	1.00	2
	2 09 14 10 084 90	seal	1.00	2
	11 09 24 03 226 90	adaptor	1.00	2
	12 09 31 09 139-33	pull-rod	1.00	30
	9 09 31 20 087-33	plug	1.00	60
	5 09 11 02 260-33	sleeve	1.00	30
	10 90 21 34 081 00 90	diverter	1.00	2