

41 610 979



- exposed trim parts
- Rain panel with 2 different spray modes
- AQUACIRCLE RAIN: Circular rain curtain, max. flow rate 6 l/min (at 3 bar)
- TEMPEST RAIN: Natural rain, max. flow rate 5 l/min (at 3 bar)
- with anti-scale system

Technical data:

- Outer diameter 1240 mm, opening diameter 450 mm
- Weight 22.5 kg
- Matt white cover, RAL 9003

Electric:

Ambient lighting

- LED colour temperature approx. 2700 K
- Bulbs protected against splashing water
- Technology: LED, not dimmable
- Provided by customer: Light switch

Environment

Planning tips:

- Not suitable for use in a steam room.
- Not suitable for outdoor use.
- Not suitable for use in chlorinated or salty environments.
- Comply with the protection zone regulations as defined in DIN VDE 0100, Part 701 (IEC 60364-7-701).

Notes:

- Control elements not included among the items supplied
- To meet the North American plumbing standards, this application must be installed with three-way diverter (rough included). Please refer to Planning Guide for proper sizing and installation methods**
Pre-assembly kit for three-way diverter included

To meet the North American plumbing standards, this application must be installed with three-way diverter (rough included).

Please refer to Planning Guide for proper sizing and installation methods

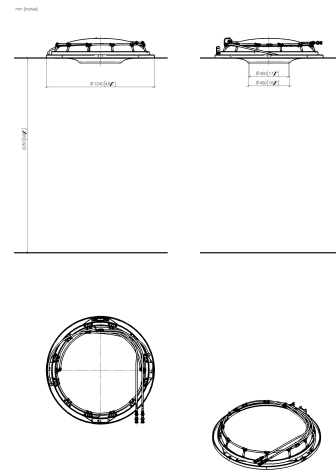
Pre-assembly kit for three-way diverter included

Required miscellaneous



- | | |
|---|----------------------|
| RAINMOON Concealed ceiling installation box - | 35 610 970-90 |
| • Ceiling installation enclosure 1356 x 1356 x 290 mm | 0010 |
| • Opening diameter 1252 mm | |
| • min. recess depth mm | |
| • concealed rough parts | |
| • Pre-assembly kit for three-way diverter included | |

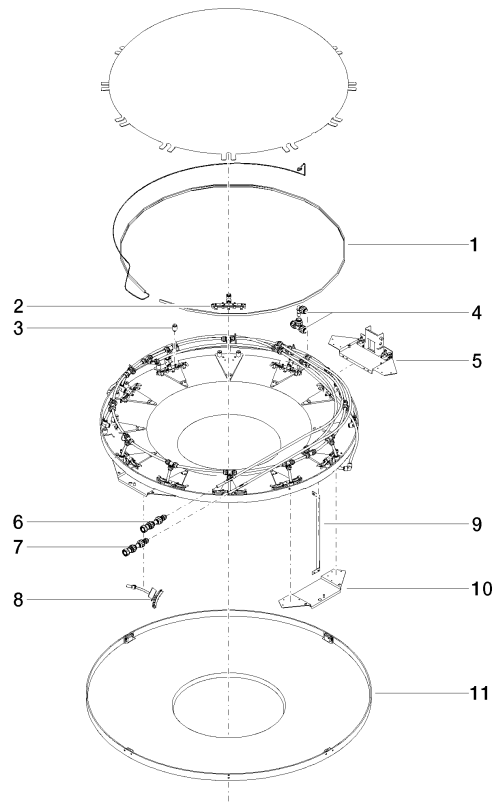
41 610 979



Codes & Standards

California Energy
Commission
(CEC)

41 610 979



Spare parts list

| No. | Item Number | Name | Quantity used | Delivery time |
|-----|--------------------|-----------------------|---------------|---------------|
| 1 | 90 10 01 183 00 90 | lamp | 1.00 | 2 |
| 9 | 90 17 20 217 00 90 | holder | 4.00 | 2 |
| 6 | 90 24 04 346 01 90 | connection AQUACIRCLE | 1.00 | 2 |
| 3 | 90 18 40 222 00 90 | adaptor | 24.00 | 2 |
| 11 | 90 11 02 325 00 90 | cover | 1.00 | 2 |
| 8 | 90 17 09 057 01 90 | jet module | 12.00 | 2 |
| 5 | 90 17 20 211 00 90 | joint | 1.00 | 2 |
| 2 | 90 17 09 056 01 90 | jet module | 12.00 | 60 |
| 4 | 90 24 04 321 00 90 | threaded connector | 1.00 | 2 |
| 10 | 90 17 20 216 00 90 | holder | 3.00 | 2 |
| 7 | 90 24 04 346 02 90 | connection TEMPEST | 1.00 | 2 |