



- exposed trim parts
- Rain panel with 3 different flow modes
- AQUACIRCLE RAIN: Circular rain curtain, max. flow rate 6.8 l/min (at 3 bar)
- TEMPEST RAIN: Natural rain, max. flow rate 6.8 l/min (at 3 bar)
- DIAMOND RAIN: Ring of rain, max. flow rate 6.8 l/min (at 3 bar)

## Technical data:

- Outer diameter: 605 mm, opening diameter: 465 mm
- Weight: 6 kg

## Electric:

### Separate LED power supply

- 350mA (CC)

### Input LED power supply

- 350mA (CC)
- Input 100-240V AC 50-60Hz
- Technology: LED, not dimmable

### Spot lighting

### Output LED power supply

### Output specification LED power supply

- IP67
- SELV (Safety Extra Low Voltage)
- Class 2

### Ceiling module power supply

- Supply pipe 7 m
- LED colour temperature approx. 3000 K
- Bulbs protected against splashing water
- Provided by customer: Light switch

## Environment

### Planning tips:






- Not suitable for outdoor use.
- Not suitable for use in a steam room.
- Not suitable for use in chlorinated or salty environments.
- Comply with the protection zone regulations as defined in DIN VDE 0100, Part 701 (IEC 60364-7-701).

### Notes:

- Recommended control element: xTool
- Contains energy efficiency class bulbs

To meet the North American plumbing standards, this application must be installed with three-way diverter (rough included).

Pre-assembly kit for three-way diverter included

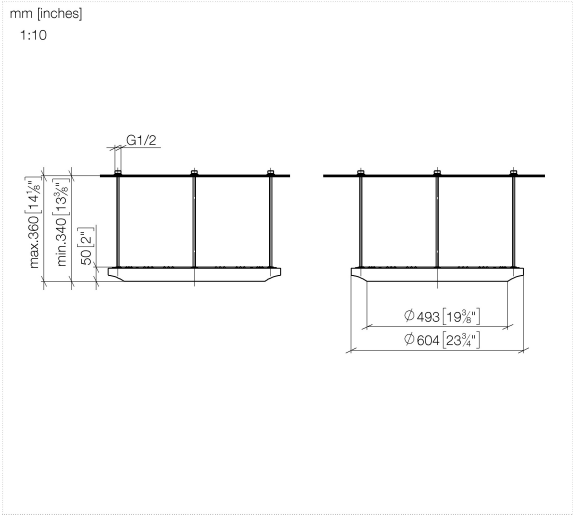
	Brushed Platinum	41 750 979-06 0010
	Chrome	41 750 979-00 0010
	Matte Black	41 750 979-33 0010
	Brushed Champagne (22kt Gold)	41 750 979-46 0010
	Champagne (22kt Gold)	41 750 979-47 0010

## Required miscellaneous



**SERIES-VARIOUS AQUAHALO** 35 750 970-06  
**Concealed ceiling installation box** 0010  
**- Brushed Platinum**

- concealed rough parts
- Pre-assembly kit for three-way diverter included
- Ceiling installation enclosure 605 x 605 x 95 mm
- Weight: 10 kg
- min. recess depth 110 mm



Codes & Standards

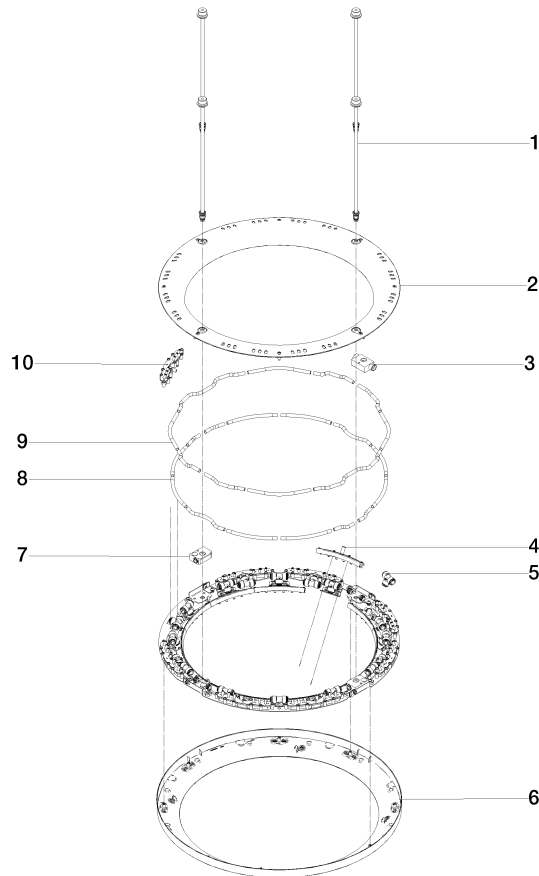
ASME A112.18.1	cUPC	EPA WaterSense	WaterSense	
----------------	------	----------------	------------	--

Certificates and sustainability

IAPMO_11777	IAPMO_4976 (
-------------	--------------

41 750 979 Product version from 4/1/2024

Parts for other  
finishes can be found  
here: [Chrome](#)



## Spare parts list

No.	Item Number	Name	Quantity used	Delivery time
1	90 28 22 605 01-06	distributor	4.00	10
2	90 12 05 087 00-06	casing	1.00	10
3	90 24 03 535 01 90	distributor	2.00	2
5	90 24 04 384 00 90	adaptor	20.00	2
10	90 17 09 061 01 90	jet module TEMPEST	8.00	2
4	90 17 09 060 02 90	jet module AQUACIRCLE	12.00	2
8	90 30 03 118 00 90	hose	1.00	2
9	90 30 03 117 00 90	hose	1.00	2
7	90 24 03 535 00 90	distributor	2.00	2
6	90 12 05 088 00-06	casing	1.00	10