

META Washstand fitting with electronic opening and closing function without pop-up waste - Chrome

META

44 511 660 Product version from 7/1/2023



- Infrared sensor technology
- 125mm projection
- height of mixer 140 mm
- height up to aerator 52 mm
- hole diameter 35 mm
- fixed spout
- max. flow 1.9 l/min
- laminar flow
- suitable for thermal disinfection
- Automatic shut-off after pre-set time is reached
- Direct temperature control at faucet
- Plug-in power supply included
- lead-free
- 2 x pressure hose with 3/8" cap nut
- This product can help a building meet the requirements of Green Building Rating Systems, e.g. LEED®, BREEAM®, DGNB

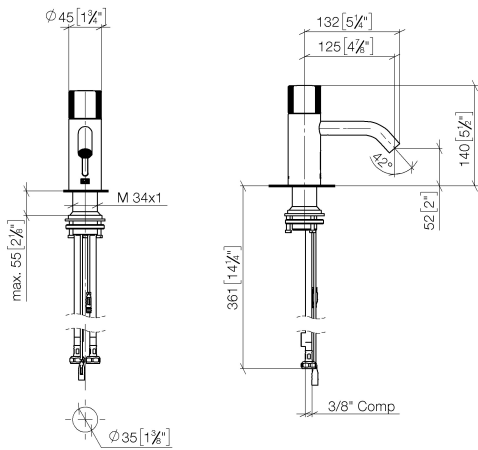
Caution: A temperature stabiliser is recommended for installations in public areas. Please observe your local building codes.

| | | |
|---|-------------------------------|--------------------|
|  | Chrome | 44 511 660-00 0010 |
|  | Brushed Platinum | 44 511 660-06 0010 |
|  | Platinum | 44 511 660-08 0010 |
|  | Dark Chrome | 44 511 660-19 0010 |
|  | Light Gold | 44 511 660-26 0010 |
|  | Brushed Light Gold | 44 511 660-27 0010 |
|  | Matte Black | 44 511 660-33 0010 |
|  | Brushed Dark Brass | 44 511 660-39 0010 |
|  | Brushed Bronze | 44 511 660-42 0010 |
|  | Brushed Champagne (22kt Gold) | 44 511 660-46 0010 |
|  | Champagne (22kt Gold) | 44 511 660-47 0010 |
|  | Brushed Chrome | 44 511 660-93 0010 |
|  | Brushed Dark Platinum | 44 511 660-99 0010 |

**META Washstand fitting with electronic opening and closing function without
pop-up waste - Chrome**

META

44 511 660 Product version from 7/1/2023
mm [inches]



Codes & Standards

| | | | |
|----------------|--|------|--------|
| ASME A112.18.1 | California Energy Commission (CEC) | cUPC | NSF372 |
|----------------|--|------|--------|

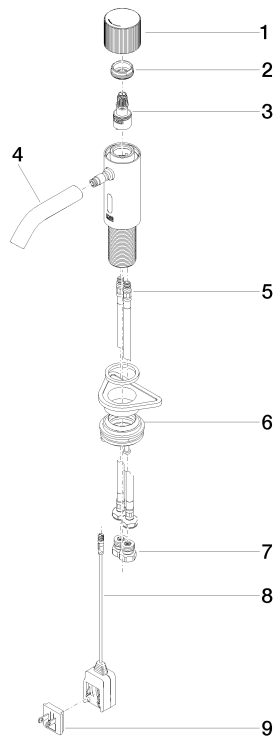
Certificates and sustainability

IAPMO_6397 IAPMO_4976 (

META Washstand fitting with electronic opening and closing function without pop-up waste - Chrome

META

44 511 660 Product version from 7/1/2023



Spare parts list

| No. | Item Number | Name | Quantity used | Delivery time |
|-----|--------------------|------------------------|---------------|---------------|
| 6 | 04 23 10 044 08 90 | fixing set | 1.00 | 2 |
| 9 | 90 10 01 254 00 90 | electronic accessories | 1.00 | 2 |
| 2 | 09 24 04 562 90 | nut | 1.00 | 60 |
| 5 | 04 30 04 100 00 90 | hose | 2.00 | 2 |
| 8 | 90 10 01 253 00 90 | power supply | 1.00 | 2 |
| 7 | 90 24 03 314 10 90 | nipple set | 2.00 | 2 |
| 1 | 90 20 66 124 00-00 | handle | 1.00 | 10 |
| 3 | 90 90 03 173 00 90 | top | 1.00 | 2 |
| 4 | 90 11 06 206 02-00 | spout | 1.00 | 10 |