

IMO Washstand fitting with electronic opening and closing function without pop-up waste - Brushed Platinum

IMO





44 515 670 Product version from 6/1/2024



- Infrared sensor technology
- 130mm projection
- height of mixer 135 mm
- height up to aerator 74 mm
- hole diameter 35 mm
- fixed spout
- max. flow 4.5 l/min
- laminar flow
- suitable for thermal disinfection
- Automatic shut-off after pre-set time is reached
- Direct temperature control at faucet
- Battery-powered (batteries not included)
- 1x CR-P2 battery required
- lead-free
- 2 x pressure hose with 3/8" cap nut
- This product can help a building meet the requirements of Green Building Rating Systems, e.g. LEED®, BREEAM®, DGNB

Batteries not included

Caution: A temperature stabiliser is recommended for installations in public areas. Please observe your local building codes.

| | | |
|---|-----------------------------------|--------------------|
|  | Brushed Platinum | 44 515 670-06 0010 |
|  | Chrome | 44 515 670-00 0010 |
|  | Platinum | 44 515 670-08 0010 |
|  | Brushed Light Gold | 44 515 670-27 0010 |
|  | Brushed Durabronze (23kt Gold) | 44 515 670-28 0010 |
|  | Matte Black | 44 515 670-33 0010 |
|  | Brushed Chrome | 44 515 670-93 0010 |
|  | Brushed Dark Platinum | 44 515 670-99 0010 |

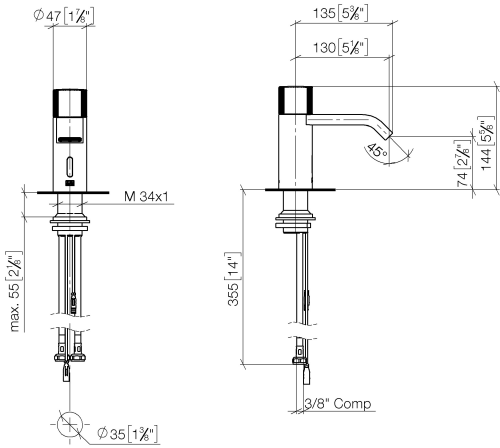
IMO Washstand fitting with electronic opening and closing function without pop-up waste - Brushed Platinum

IMO

44 515 670

Product version from 6/1/2024

mm [inches]



Codes & Standards

| | | | |
|----------------|------------------------------------|------|--------|
| ASME A112.18.1 | California Energy Commission (CEC) | cUPC | NSF372 |
|----------------|------------------------------------|------|--------|

Certificates and sustainability

IAPMO_6397

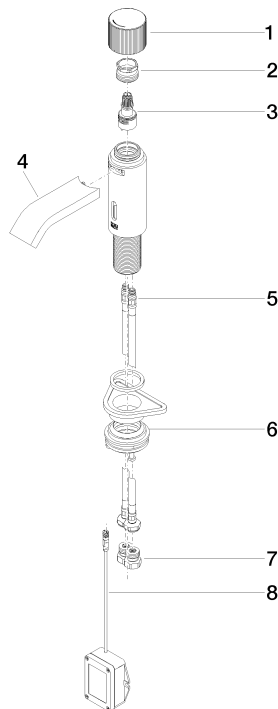
IAPMO_4976 (

IMO Washstand fitting with electronic opening and closing function without pop-up waste - Brushed Platinum

IMO

44 515 670 Product version from 6/1/2024

Parts for other
finishes can be found
here: [Chrome](#)



Spare parts list

| No. | Item Number | Name | Quantity used | Delivery time |
|-----|--------------------|-----------------------|---------------|---------------|
| 5 | 04 30 04 100 00 90 | hose | 2.00 | 2 |
| 1 | 90 20 66 122 00-06 | handle | 1.00 | 10 |
| 2 | 09 24 04 565 90 | nut | 1.00 | 60 |
| 6 | 04 23 10 044 08 90 | fixing set | 1.00 | 2 |
| 8 | 90 10 01 250 00 90 | casingwithout battery | 1.00 | 2 |
| 4 | 90 28 22 239 01-06 | spout | 1.00 | 10 |
| 3 | 90 90 03 173 00 90 | top | 1.00 | 2 |
| 7 | 90 24 03 314 10 90 | nipple set | 2.00 | 2 |