








MADISON Tissue holder without cover - Brushed Dark Brass

MADISON

83 500 361 Product version from 7/3/2016

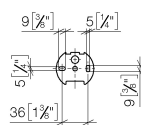
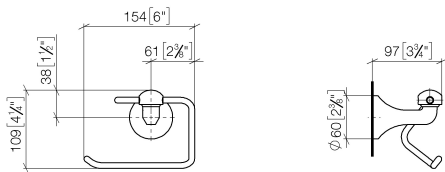


- width 145mm
- height 120 mm
- 95mm projection

	Brushed Dark Brass	83 500 361-39
	Chrome	83 500 361-00
	Brushed Platinum	83 500 361-06
	Platinum	83 500 361-08
	Durabrass (23kt Gold)	83 500 361-09
	Brushed Durabrass (23kt Gold)	83 500 361-28
	Brushed Dark Platinum	83 500 361-99

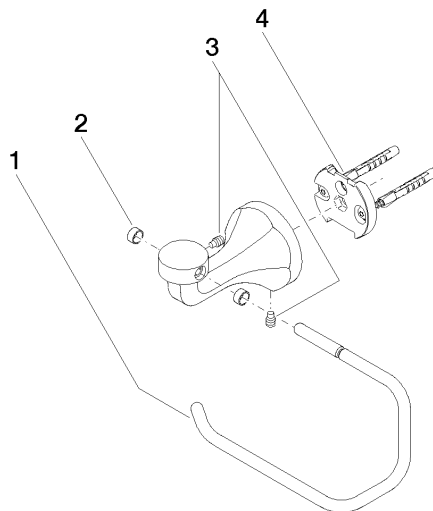
83 500 361 Product version from 7/3/2016

mm [inches]



83 500 361 Product version from 7/3/2016

Parts for other
finishes can be found
here: [Chrome](#)



Spare parts list

No.	Item Number	Name	Quantity used	Delivery time
1	08 18 70 501-39	bow	1.00	-
Spare part can no longer be ordered, please order the replacement item				
4	05 17 97 507 00 90	fixing set	1.00	2
3	04 31 11 140 00 90	pin	2.00	2
2	08 18 40 505 90	sleeve	2.00	2