










MADISON Siphon 1 1/4" - Laiton (Or 23cts)

10 040 970

• rosace Ø 80 mm

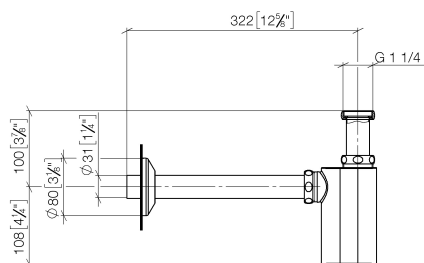


	Laiton (Or 23cts)	10 040 970-09
	Chrome	10 040 970-00
	Platine brossé	10 040 970-06
	Platine	10 040 970-08
	Dark Chrome	10 040 970-19
	Laiton brossé (Or 23cts)	10 040 970-28
	Champagne brossé (Or 22cts)	10 040 970-46
	Champagne (Or 22cts)	10 040 970-47
	Dark Platinum brossé	10 040 970-99

MADISON Siphon 1 1/4" - Laiton (Or 23cts)

10 040 970

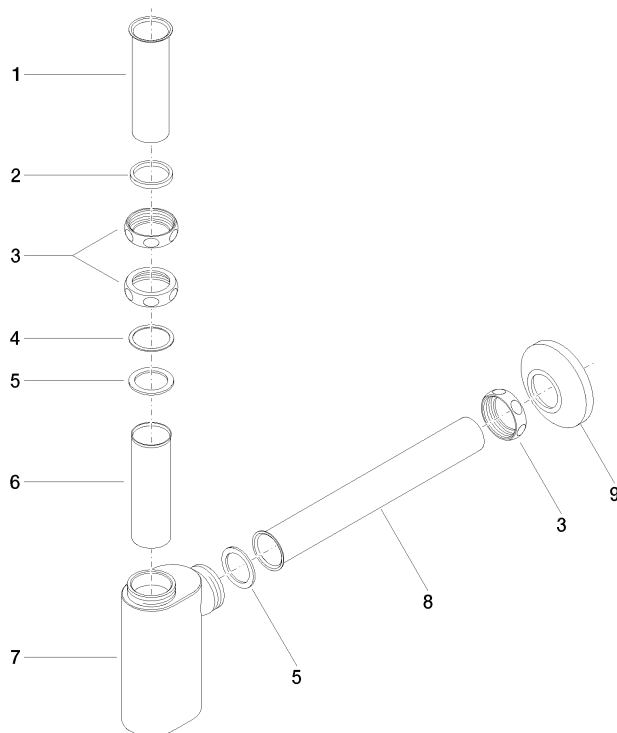
mm [inches]



MADISON Siphon 1 1/4" - Laiton (Or 23cts)

10 040 970

Les pièces pour les
autres finitions
peuvent être
trouvées ici : Chrome



Liste des pièces de rechange

N°	Article Numéro	Désignation	Fréquence de montage	Délai de livraison
1	09 28 23 005-09	Tube Ø 32 x 0,75 x 110 mm - Laiton (Or 23cts)	1	40
2	09 14 05 017 90	joint	1	2
3	09 23 30 015-09	écrou	3	40
4	09 28 10 003 90	anneau	1	2
5	09 14 05 016 90	Joint NBR 70 39,0 x 29,0 x 2,0 mm -	2	2
6	09 28 23 006 90	tuyau	1	2
7	09 19 22 080-09	boîtier	1	40
8	09 28 23 002-09	tuyau	1	40
9	90 27 01 015 00-09	rosace	1	-

La pièce de rechange ne peut plus être commandée, veuillez commander l'article de remplacement