


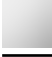
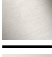







## MADISON Siphon 1 1/4" - Champagne (Or 22cts)

MADISON

10 040 970 Version du produit de 01/07/2025

• rosace Ø 80 mm



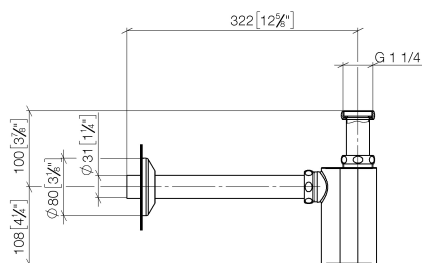
	Champagne (Or 22cts)	10 040 970-47
	Chrome	10 040 970-00
	Platine brossé	10 040 970-06
	Platine	10 040 970-08
	Laiton (Or 23cts)	10 040 970-09
	Dark Chrome	10 040 970-19
	Laiton brossé (Or 23cts)	10 040 970-28
	Dark Brass brossé	10 040 970-39
	Champagne brossé (Or 22cts)	10 040 970-46
	Dark Platinum brossé	10 040 970-99

# MADISON Siphon 1 1/4" - Champagne (Or 22cts)

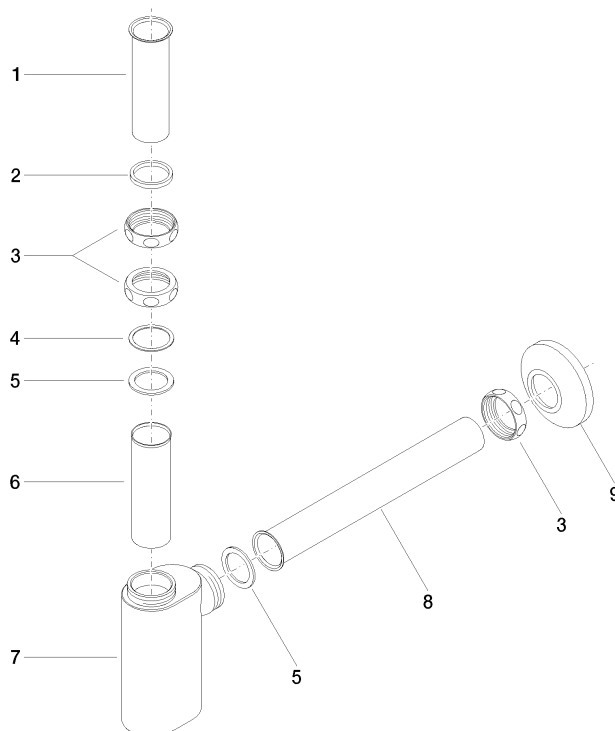
MADISON

10 040 970 Version du produit de 01/07/2025

mm [inches]



Les pièces pour les  
autres finitions  
peuvent être  
trouvées ici : Chrome



## Liste des pièces de rechange

N°	Article Numéro	Désignation	Fréquence de montage	Délai de livraison
5	09 14 05 016 90	Joint NBR 70 39,0 x 29,0 x 2,0 mm -	2,00	2
2	09 14 05 017 90	joint	1,00	2
8	09 28 23 002-47	tuyau	1,00	30
7	09 19 22 080-47	boîtier	1,00	30
6	09 28 23 006 90	tuyau	1,00	2
1	09 28 23 005-47	Tube Ø 32 x 0,75 x 110 mm - Champagne (Or 22cts)	1,00	30
3	09 23 30 015-47	écrou	3,00	30
4	09 28 10 003 90	anneau	1,00	2
9	90 27 01 015 00-47	rosace	1,00	-

La pièce de rechange ne peut plus être commandée, veuillez commander l'article de remplacement