

## Rosace pour le couvercle de trou de robinet - Champagne (Or 22cts)

ARTICLES  
GÉNÉRIQUES

12 730 970 Version du produit de 01/10/2023















- rosace Ø 52 mm

Uniquement combinable avec les parties apparentes

33800875-FF / 33805875-FF / 33816875-FF /  
33818875-FF / 33826875-FF / 13700845-FF /  
13700846-FF / 20713845-FF / 20713846-FF /

33500845-FF / 33506845-FF / 33521845-FF /  
33526845-FF / 33526845-FF / 33500670-FF /  
33521670-FF / 33537670-FF / 33600670-FF /  
33800760-FF / 33800790-FF / 33826790-FF.

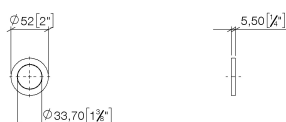
|   |                             |               |
|---|-----------------------------|---------------|
|    | Champagne (Or 22cts)        | 12 730 970-47 |
|    | Chrome                      | 12 730 970-00 |
|    | Platine brossé              | 12 730 970-06 |
|    | Platine                     | 12 730 970-08 |
|    | Dark Chrome                 | 12 730 970-19 |
|    | Light Gold                  | 12 730 970-26 |
|    | Light Gold brossé           | 12 730 970-27 |
|    | Laiton brossé (Or 23cts)    | 12 730 970-28 |
|    | Noir mat                    | 12 730 970-33 |
|   | Dark Brass brossé           | 12 730 970-39 |
|  | Bronze brossé               | 12 730 970-42 |
|  | Champagne brossé (Or 22cts) | 12 730 970-46 |
|  | Chrome brossé               | 12 730 970-93 |
|  | Dark Platinum brossé        | 12 730 970-99 |

## Rosace pour le couvercle de trou de robinet - Champagne (Or 22cts)

ARTICLES  
GÉNÉRIQUES

12 730 970 Version du produit de 01/10/2023

mm [inches]

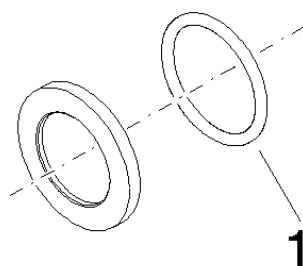


## Rosace pour le couvercle de trou de robinet - Champagne (Or 22cts)

ARTICLES  
GÉNÉRIQUES

12 730 970 Version du produit de 01/10/2023

Les pièces pour les  
autres finitions  
peuvent être  
trouvées ici : Chrome



### Liste des pièces de rechange

| N° | Article Numéro     | Désignation | Fréquence de montage | Délai de livraison |
|----|--------------------|-------------|----------------------|--------------------|
| 1  | 90 14 10 043 00 90 | joint       | 1,00                 | 2                  |