


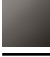




36 060 845

- Abdeckplatte 78 x 78 mm



| | | |
|---|-------------------------|---------------|
|  | Chrom gebürstet | 36 060 845-93 |
|  | Chrom | 36 060 845-00 |
|  | Platin gebürstet | 36 060 845-06 |
|  | Dark Chrome | 36 060 845-19 |
|  | Schwarz matt | 36 060 845-33 |
|  | Dark Platinum gebürstet | 36 060 845-99 |

Benötigtes Zubehör



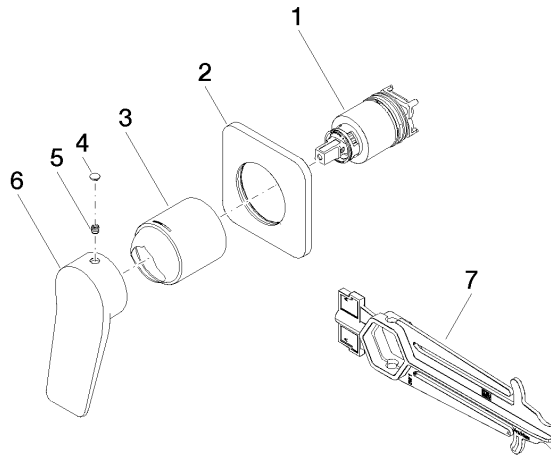
- UP-Wand-Einhandbatterie -** 35 860 970 90
- Max. Einbautiefe 95 mm
 - Min. Einbautiefe 80 mm



Zertifikate

LGA_29905.

36 060 845



Ersatzteilstückliste

| Nr. | Artikelnummer | Benennung | Verbaumenge | Lieferzeit |
|-----|--------------------|-----------|-------------|------------|
| 1 | 90 15 05 046 02 90 | Kartusche | 1 | 2 |
| 2 | 90 27 84 020 00-93 | Rosette | 1 | 20 |
| 3 | 09 11 02 288-93 | Haube | 1 | 20 |
| 4 | 90 31 20 087 00-93 | Stopfen | 1 | 20 |
| 5 | 90 31 11 030 00 90 | Stift | 1 | 2 |
| 6 | 09 20 84 021-93 | Griff | 1 | 20 |
| 7 | 90 30 09 064 00 90 | Schlüssel | 1 | 2 |