










MADISON Siphon 1 1/4" - Chrome

MADISON

10 040 970

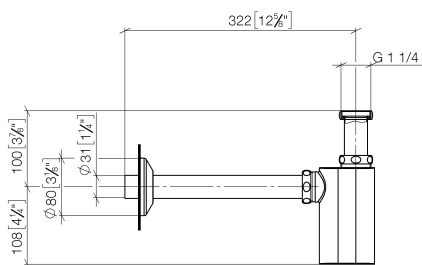
• rosace Ø 80 mm



	Chrome	10 040 970-00
	Platine brossé	10 040 970-06
	Platine	10 040 970-08
	Laiton (Or 23cts)	10 040 970-09
	Dark Chrome	10 040 970-19
	Laiton brossé (Or 23cts)	10 040 970-28
	Champagne brossé (Or 22cts)	10 040 970-46
	Champagne (Or 22cts)	10 040 970-47
	Dark Platinum brossé	10 040 970-99

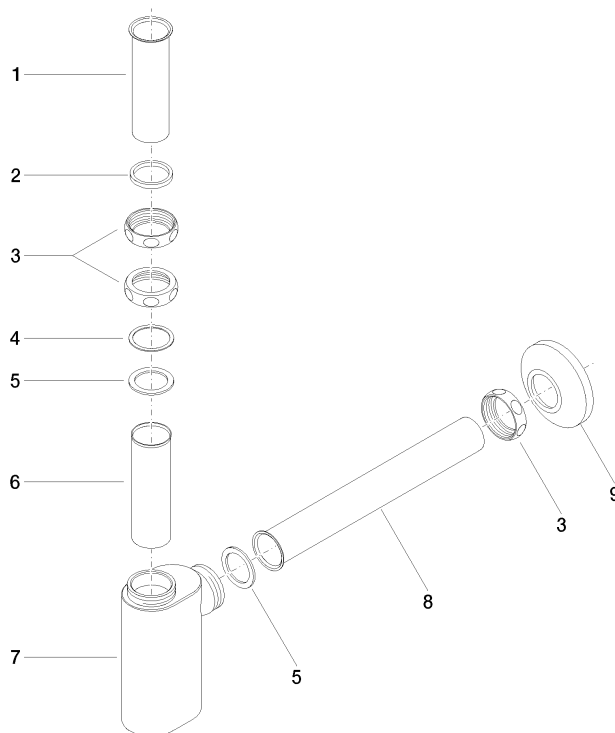
10 040 970

mm [inches]



10 040 970

Les pièces pour les
autres finitions
peuvent être
trouvées ici : Platine
brossé



Liste des pièces de rechange

N°	Article Numéro	Désignation	Fréquence de montage	Délai de livraison
2	09 14 05 017 90	joint	1,00	2
5	09 14 05 016 90	Joint NBR 70 39,0 x 29,0 x 2,0 mm -	2,00	2
7	09 19 22 080-00	boîtier	1,00	10
8	09 28 23 002-00	tuyau	1,00	10
1	09 28 23 005-00	Tube Ø 32 x 0,75 x 110 mm - Chrome	1,00	10
6	09 28 23 006 90	tuyau	1,00	2
3	09 23 30 015-00	écrou	3,00	10
4	09 28 10 003 90	anneau	1,00	2
9	90 27 01 015 00-00	rosace	1,00	10