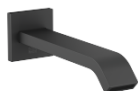




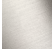




## IMO Bec déverseur de bain pour montage mural - Noir mat

IMO

13 801 670



- saillie 200 mm
- jet normal rectangulaire
- diamètre de percement 37 mm
- raccord 1/2"
- débit d'eau maxi. 25,1 l/min avec une pression d'écoulement de 3 bars

	Noir mat	13 801 670-33
	Chrome	13 801 670-00
	Platine brossé	13 801 670-06
	Dark Chrome	13 801 670-19
	Light Gold brossé	13 801 670-27
	Chrome brossé	13 801 670-93
	Dark Platinum brossé	13 801 670-99

### Accessoires recommandés



- Coude mural à encastrer -** 35 085 970 90
- profondeur de montage mini. 90 mm
  - profondeur de montage max. 163 mm

13 801 670

mm [inches]

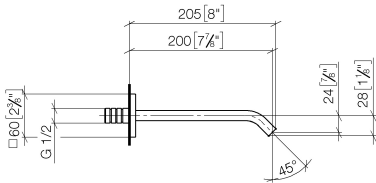
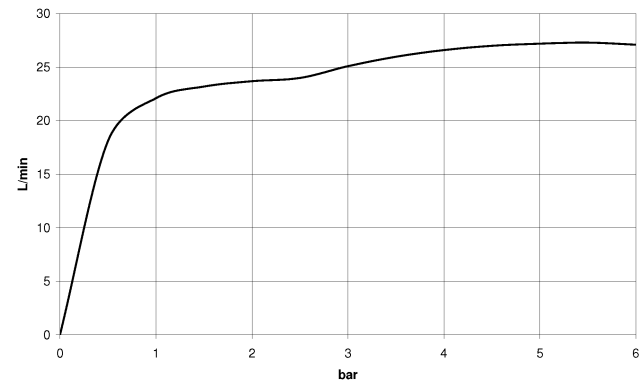


Diagramme de débit



Codes & Standards

ASME A112.18.1	cUPC	Scottish Water Byelaws	UK Water Supply Regulations
----------------	------	------------------------	-----------------------------



## IMO Bec déverseur de bain pour montage mural - Noir mat

---

IMO

13 801 670

### Certificats et durabilité

---

IAPMO\_4976

WRAS\_2005

