


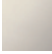







13 801 809



- saillie 200 mm
- jet normal circulaire
- diamètre de percement 37 mm
- rosace Ø 60 mm
- raccord 1/2"
- débit d'eau maxi. 21,5 l/min avec une pression d'écoulement de 3 bars

	Champagne (Or 22cts)	13 801 809-47
	Chrome	13 801 809-00
	Platine brossé	13 801 809-06
	Platine	13 801 809-08
	Dark Chrome	13 801 809-19
	Laiton brossé (Or 23cts)	13 801 809-28
	Bronze brossé	13 801 809-42
	Champagne brossé (Or 22cts)	13 801 809-46
	Dark Platinum brossé	13 801 809-99

Accessoires recommandés



- Coude mural à encastrer -** 35 085 970 90
- profondeur de montage max. 163 mm
 - profondeur de montage mini. 90 mm

13 801 809

mm [inches]



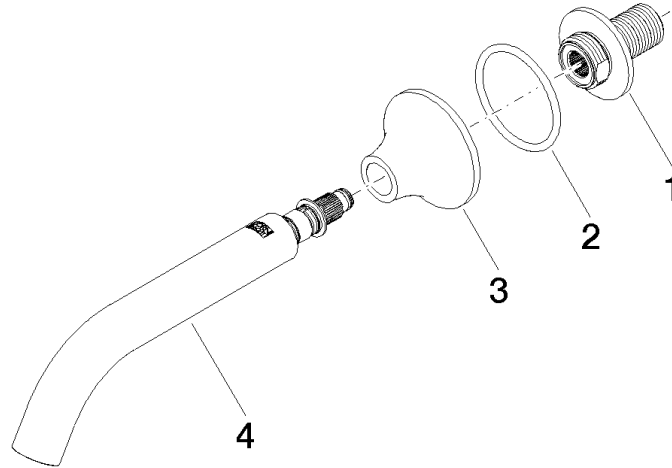
Diagramme de débit



Certificats

WRAS_2306002. LGA_29290.

13 801 809



Liste des pièces de rechange

N°	Article Numéro	Désignation	Fréquence de montage	Délai de livraison
1	09 24 03 269 90	raccord à vis	1	2
2	09 14 10 084 90	joint	1	2
3	09 27 80 014-47	rosace	1	30
4	90 28 22 315 00-47	bec déverseur	1	30