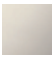
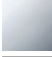
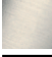


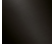


22 900 361

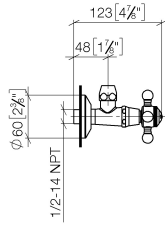
- rosace Ø 60 mm
- plaquette en porcelaine HOT



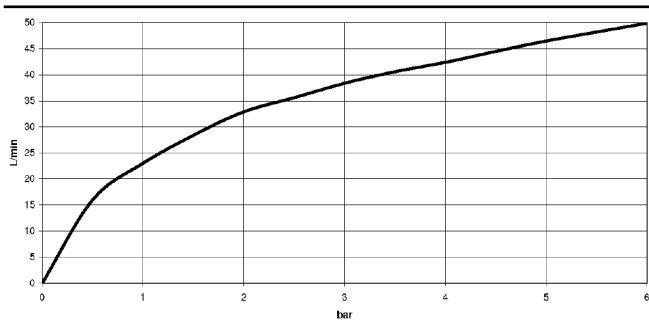
	Platine	22 900 361-08
	Chrome	22 900 361-00
	Platine brossé	22 900 361-06
	Laiton (Or 23cts)	22 900 361-09
	Laiton brossé (Or 23cts)	22 900 361-28
	Dark Platinum brossé	22 900 361-99

22 900 361

mm [inches]

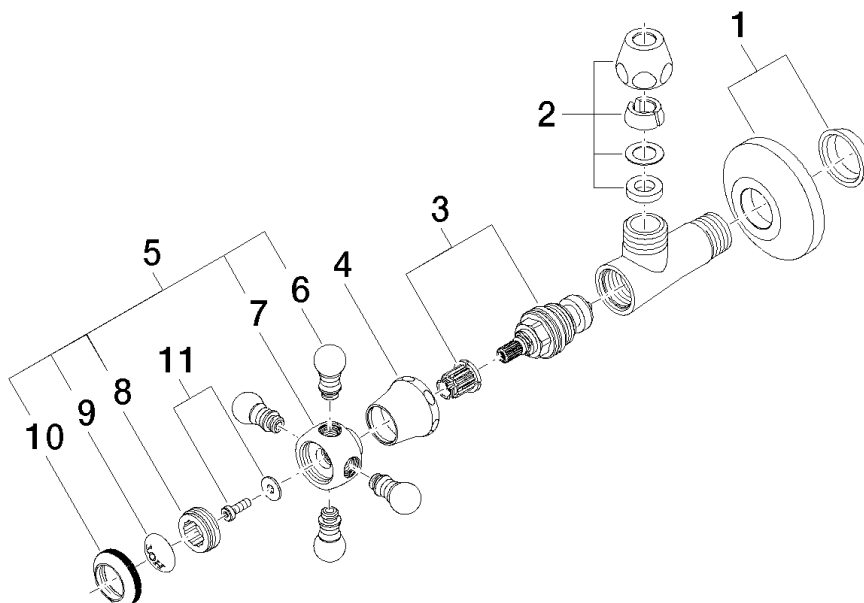


### Diagramme de débit



22 900 361

Les pièces pour les autres finitions peuvent être trouvées ici : [Chrome](#)



### Liste des pièces de rechange

N°	Article Numéro	Désignation	Fréquence de montage	Délai de livraison
1	04 27 01 003 00-08	rosace	1	60
2	90 23 30 040 00-08	joint américain	1	40
3	90 90 03 023 01 90	tête céramique	1	2
4	09 21 02 055-08	hotte	1	40
5	04 20 36 002 07-08	poignée ( hot )	1	40
6	09 20 36 004-08	poignée	4	40
7	09 20 36 002-08	poignée	1	40
8	09 20 83 006 90	poignée	1	2
9	09 26 01 011 90	accessoires	1	2
10	09 20 36 005-08	poignée	1	40
11	04 30 30 029 00 90	set de fixation	1	2