


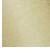
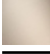




36 200 985

- inverseur rotatif
- rosace 60 x 60 mm



|   |                             |               |
|---|-----------------------------|---------------|
|  | Chrome                      | 36 200 985-00 |
|  | Platine brossé              | 36 200 985-06 |
|  | Or clair brossé             | 36 200 985-27 |
|  | Laiton brossé (Or 23cts)    | 36 200 985-28 |
|  | Champagne brossé (Or 22cts) | 36 200 985-46 |
|  | Champagne (Or 22cts)        | 36 200 985-47 |
|  | Dark Platinum brossé        | 36 200 985-99 |

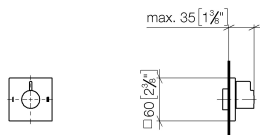
### Accessoires requis



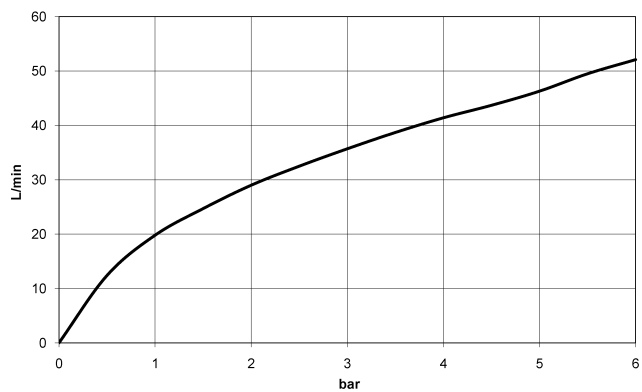
- Inverseur à 2 voies à encastrer -** 35 202 970 90
- profondeur de montage max. 160 mm
  - profondeur de montage mini. 85 mm

36 200 985

mm [inches]



**Diagramme de débit**

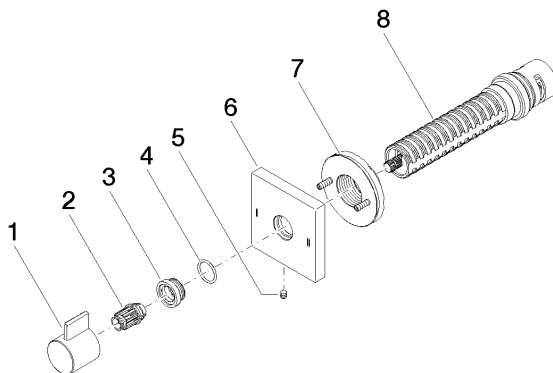


**Certificats**

LGA\_38379.

WRAS\_2307045.

36 200 985



### Liste des pièces de rechange

| N° | Article Numéro     | Désignation             | Fréquence de montage | Délai de livraison |
|----|--------------------|-------------------------|----------------------|--------------------|
| 1  | 09 20 98 002-00    | poignée                 | 1                    | 10                 |
| 2  | 09 12 12 005 90    | douille d'enclenchement | 1                    | 2                  |
| 3  | 09 12 12 043-00    | prise                   | 1                    | 10                 |
| 4  | 09 14 10 017 90    | joint                   | 1                    | 2                  |
| 5  | 09 31 11 294 90    | tige                    | 1                    | 2                  |
| 6  | 09 27 98 037-00    | rosace                  | 1                    | 10                 |
| 7  | 90 21 02 181 00 90 | rondelle                | 1                    | 2                  |
| 8  | 90 90 03 304 10 90 | inverseur               | 1                    | 2                  |