
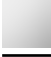
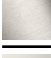







SYMETRICS Rubinetto incasso chiusura senso antiorario 1/2" - Light Gold spazzolato

SYMETRICS

36 607 985	Versione del prodotto da 01/06/2024		
	<ul style="list-style-type: none"> • rosetta 60 x 60 mm • parte superiore con perno e boccola accorciabili 		
		 Light Gold spazzolato	36 607 985-27
		 Cromato	36 607 985-00
		 Platinato spazzolato	36 607 985-06
		 Platinato	36 607 985-08
		 Dark Chrome	36 607 985-19
		 Ottone spazzolato (Oro 23k)	36 607 985-28
		 Cromo spazzolato	36 607 985-93
		 Dark Platinum spazzolato	36 607 985-99



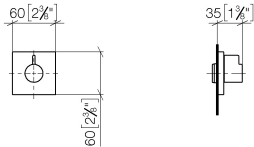


SYMETRICS Rubinetto incasso chiusura senso antiorario 1/2" - Light Gold
spazzolato

SYMETRICS

36 607 985 Versione del prodotto da 01/06/2024

mm [inches]



Codes & Standards			
DIN 4109	EN 1111	ISO 3822	Scottish Water Byelaws
UK Water Supply Regulations	Ü-Zeichen		

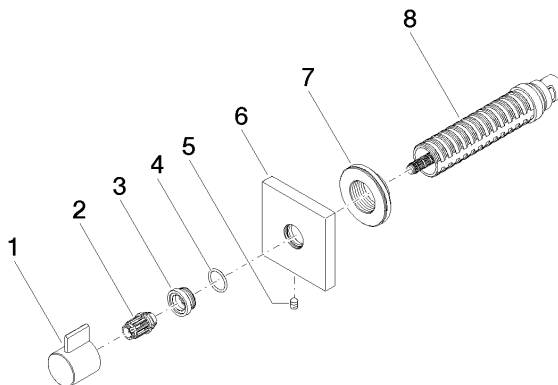
Certificati e sostenibilità			
WRAS_2011	LGA_29	WRAS_2010	DVGW_DW-6512DN0

SYMETRICS Rubinetto incasso chiusura senso antiorario 1/2" - Light Gold spazzolato

SYMETRICS

36 607 985 Versione del prodotto da 01/06/2024

Parts for other
finishes can be found
here: Cromato



Elenco delle parti di ricambio

N.	Codice articolo	Denominazione	Quantità necessaria	Tempo di produzione
7	09 21 02 151 90	bussola	1,00	2
5	90 31 11 004 00 90	perno	1,00	2
8	90 90 03 202 00 90	parte superiore	1,00	2
4	09 14 10 017 90	guarnizione	1,00	2
6	09 27 98 014-27	rosetta	1,00	60
3	09 12 12 043-27	alloggio	1,00	60
1	09 20 98 002-27	manopola	1,00	60
2	09 12 12 005 90	bussola a scatto	1,00	2