

## WATER FALL Cascade spout with individual jets for wall mounting - Brushed Bronze


IMO

13 425 979



- 22mm projection
- PEARLSTREAM
- plate 240 mm x 60 mm
- connection 1/2", for shortening
- plug-link mounting
- Max. flow rate 9.5 l/min (at 3 bar)

Fits: IMO, LULU, MADISON, MEM, TARA, CL.1, LISSÉ, VAIA, META, CYO

|  |                                |               |
|--|--------------------------------|---------------|
|    | Brushed Bronze                 | 13 425 979-42 |
|    | Chrome                         | 13 425 979-00 |
|    | Brushed Platinum               | 13 425 979-06 |
|    | Platinum                       | 13 425 979-08 |
|    | Dark Chrome                    | 13 425 979-19 |
|    | Light Gold                     | 13 425 979-26 |
|    | Brushed Light Gold             | 13 425 979-27 |
|    | Brushed Durabronze (23kt Gold) | 13 425 979-28 |
|    | Matte Black                    | 13 425 979-33 |
|   | Brushed Champagne (22kt Gold)  | 13 425 979-46 |
|  | Champagne (22kt Gold)          | 13 425 979-47 |
|  | Brushed Chrome                 | 13 425 979-93 |
|  | Brushed Dark Platinum          | 13 425 979-99 |

### Recommended miscellaneous



- Concealed wall elbow -**
- min. recess depth 90 mm
  - max. recess depth 163 mm

35 085 970 90

### Recommended miscellaneous



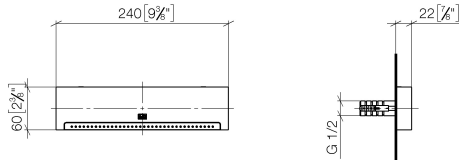
- Concealed wall elbow -**
- min. recess depth 90 mm
  - max. recess depth 163 mm

35 085 970 90

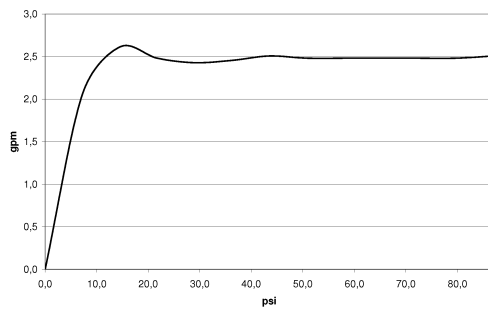
# WATER FALL Cascade spout with individual jets for wall mounting - Brushed Bronze

IMO

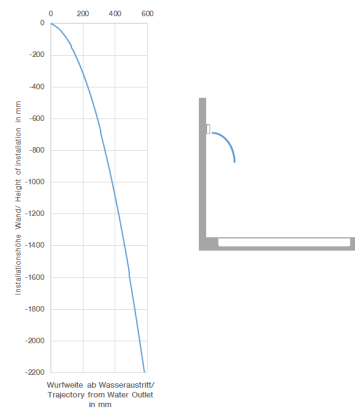
13 425 979  
mm [inches]



Flow rate chart



Trajectory diagram



## Codes & Standards

DIN 4109

ISO 3822

Ü-Zeichen



## WATER FALL Cascade spout with individual jets for wall mounting - Brushed Bronze

IMO

---

13 425 979

Certificates

---

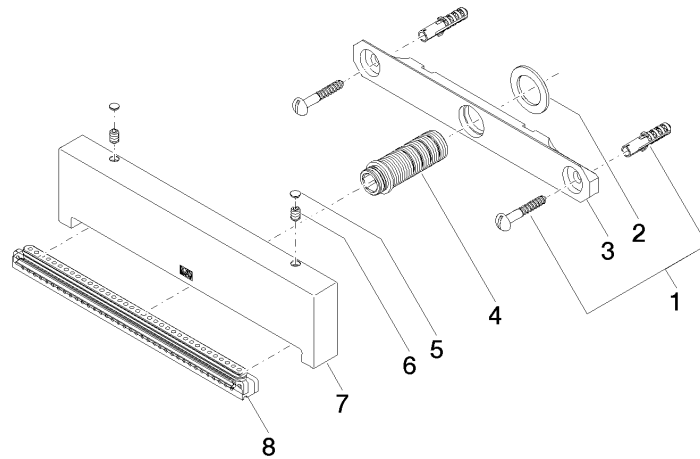
LGA\_19

# WATER FALL Cascade spout with individual jets for wall mounting - Brushed Bronze

IMO

13 425 979

**Product version from 10/1/2023**





WATER FALL Cascade spout with individual jets for wall mounting - Brushed  
Bronze

IMO

13 425 979

Spare parts list

Product version from 10/1/2023

| No. | Item Number        | Name       | Quantity used | Delivery time |
|-----|--------------------|------------|---------------|---------------|
|     | 04 30 31 024 01 90 | fixing set | 9             | 2             |