



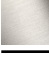

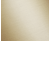

CL.1 Bath spout without diverter for deck mounting - Brushed Dark Platinum

CL.1

13 612 705

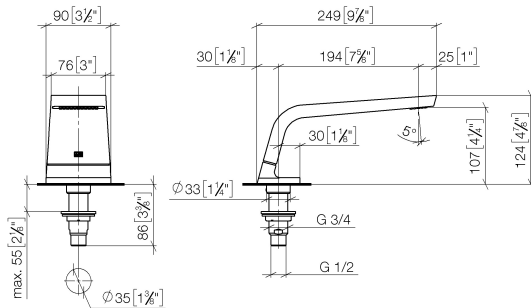


- 200mm projection
- rectangular spray pattern with 55 individual jets
- height of mixer 125 mm
- height up to aerator 108 mm
- hole diameter 35 mm
- 1/2" connection
- max. flow 24.6 l/min at 3 bar flow pressure
- WRAS 1512010

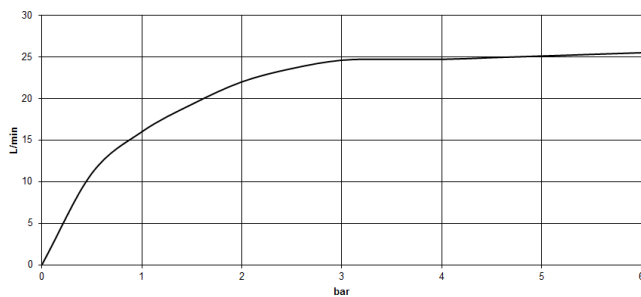
| | | |
|--|-------------------------------|---------------|
|  | Brushed Dark Platinum | 13 612 705-99 |
|  | Chrome | 13 612 705-00 |
|  | Brushed Platinum | 13 612 705-06 |
|  | Dark Chrome | 13 612 705-19 |
|  | Brushed Champagne (22kt Gold) | 13 612 705-46 |
|  | Champagne (22kt Gold) | 13 612 705-47 |

13 612 705

mm [inches]



Flow rate chart



Codes & Standards

ASME A112.18.1

cUPC

DIN 4109

ISO 3822

Scottish Water
Byelaws

UK Water Supply
Regulations

Ü-Zeichen



CL.1 Bath spout without diverter for deck mounting - Brushed Dark Platinum

CL.1

13 612 705

Certificates

IAPMO_4976

LGA_28

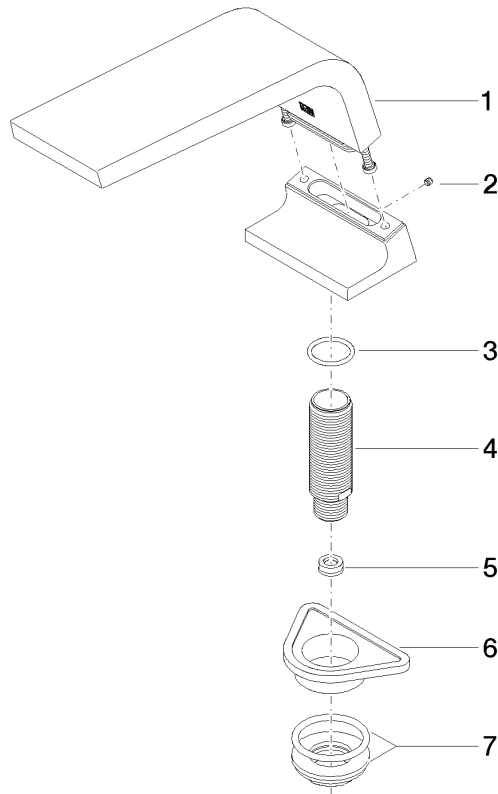
WRAS_1512

13 612 705

Product version from 3/9/2015 to 5/27/2021

Product version from 5/27/2021

Parts for other
finishes can be found
here: [Chrome](#)





CL.1 Bath spout without diverter for deck mounting - Brushed Dark Platinum

CL.1

13 612 705

Spare parts list

Product version from 3/9/2015 to 5/27/2021

Product version from 5/27/2021

| No. | Item Number | Name | Quantity used | Delivery time |
|-----|--------------------|-------|---------------|---------------|
| | 90 11 70 007 00-99 | spout | 7 | - |

Spare part can no longer be ordered, please order the replacement item