



MEM Wall-mounted basin spout without pop-up waste - Brushed Champagne (22kt Gold)

MEM

13 800 782	<div>  <ul style="list-style-type: none"> • 200mm projection • fixed spout • rectangular, air-enriched flow • hole diameter 37 mm • rosette 60 x 60 mm • 1/2" connection • max. flow 5.7 l/min • lead-free • WRAS 2203039 • This product can help a building meet the requirements of Green Building Rating Systems, e.g. LEED®, BREEAM®, DGNB </div>	<div> <div>  Brushed Champagne (22kt Gold) </div> <div>13 800 782-46</div> </div>
		<div> <div>  Chrome </div> <div>13 800 782-00</div> </div>
		<div> <div>  Brushed Platinum </div> <div>13 800 782-06</div> </div>
		<div> <div>  Platinum </div> <div>13 800 782-08</div> </div>
		<div> <div>  Dark Chrome </div> <div>13 800 782-19</div> </div>
		<div> <div>  Brushed Durabronze (23kt Gold) </div> <div>13 800 782-28</div> </div>
		<div> <div>  Champagne (22kt Gold) </div> <div>13 800 782-47</div> </div>
		<div> <div>  Brushed Dark Platinum </div> <div>13 800 782-99</div> </div>

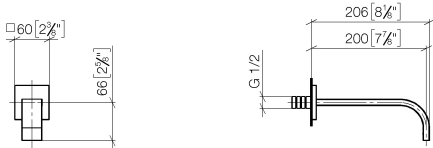
Recommended miscellaneous

<div>  <div> <div>Concealed wall elbow -</div> <ul style="list-style-type: none"> • min. recess depth 90 mm • max. recess depth 163 mm </div> </div>	35 085 970 90
---	---------------

**MEM Wall-mounted basin spout without pop-up waste - Brushed Champagne
(22kt Gold)**

MEM

13 800 782
mm [inches]



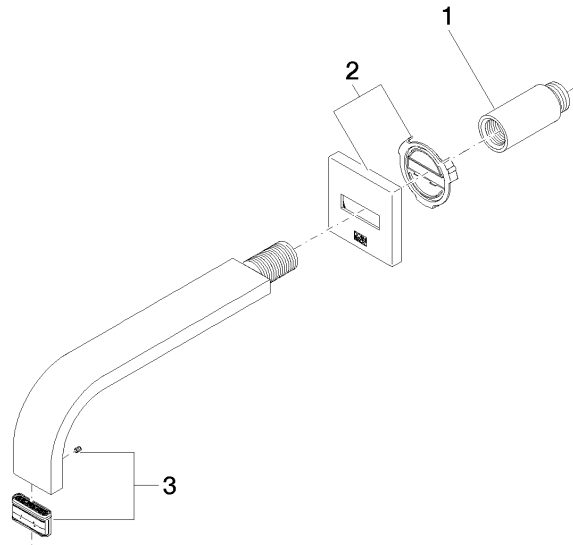
Flow rate chart



Certificates

WRAS_2203039.

13 800 782



Spare parts list

No.	Item Number	Name	Quantity used	Delivery time
1	09 24 03 081 10 90	extension	1	2
2	90 27 78 035 00-46	rosette	1	30
3	90 29 03 109 00 90	aerator	1	2