



MEM Wall-mounted basin spout without pop-up waste - Champagne (22kt Gold)

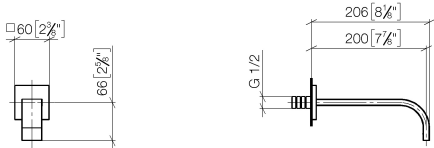
MEM

| | | | |
|---|---|--|--|
| 13 800 782 | | | |
|  | <ul style="list-style-type: none"> • 200mm projection • fixed spout • rectangular, air-enriched flow • hole diameter 37 mm • rosette 60 x 60 mm • 1/2" connection • max. flow 5.7 l/min • lead-free • WRAS 2203039 • This product can help a building meet the requirements of Green Building Rating Systems, e.g. LEED®, BREEAM®, DGNB | <div>Champagne (22kt Gold)13 800 782-47</div> <div>Chrome13 800 782-00</div> <div>Brushed Platinum13 800 782-06</div> <div>Platinum13 800 782-08</div> <div>Dark Chrome13 800 782-19</div> <div>Brushed Durabronz (23kt Gold)13 800 782-28</div> <div>Brushed Champagne (22kt Gold)13 800 782-46</div> <div>Brushed Dark Platinum13 800 782-99</div> | |

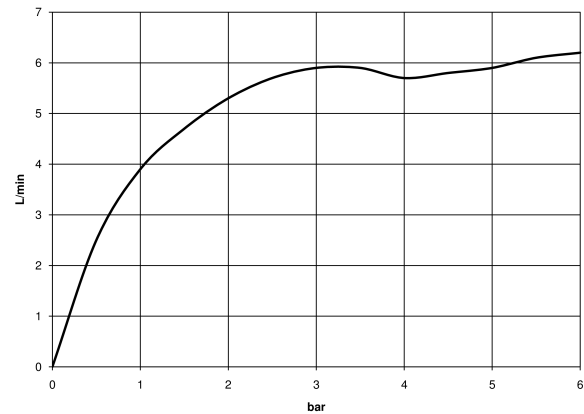
Recommended miscellaneous

| | | |
|--|--|---------------|
|  | Concealed wall elbow - •min. recess depth 90 mm •max. recess depth 163 mm | 35 085 970 90 |
|--|--|---------------|

13 800 782
mm [inches]



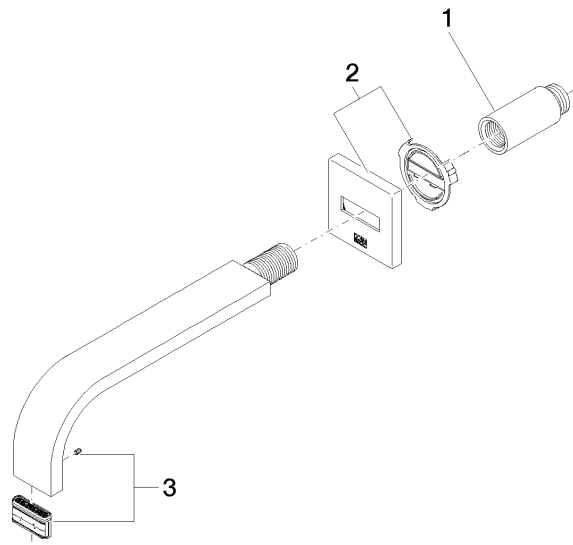
Flow rate chart



Certificates

WRAS_2203039.

13 800 782



Spare parts list

| No. | Item Number | Name | Quantity used | Delivery time |
|-----|--------------------|-----------|---------------|---------------|
| 1 | 09 24 03 081 10 90 | extension | 1 | 2 |
| 2 | 90 27 78 035 00-47 | rosette | 1 | 30 |
| 3 | 90 29 03 109 00 90 | aerator | 1 | 2 |