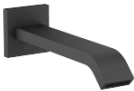









IMO Bath spout for wall mounting - Matte Black

13 801 670



- 200mm projection
- rectangular normal flow
- hole diameter 37 mm
- 1/2" connection
- max. flow 25.1 l/min at 3 bar flow pressure
- WRAS

	Matte Black	13 801 670-33
	Chrome	13 801 670-00
	Brushed Platinum	13 801 670-06
	Dark Chrome	13 801 670-19
	Brushed Light Gold	13 801 670-27
	Brushed Chrome	13 801 670-93
	Brushed Dark Platinum	13 801 670-99

Recommended miscellaneous



- Concealed wall elbow -

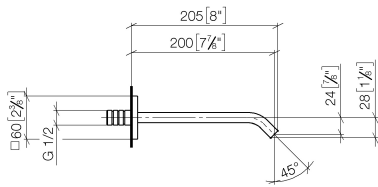
  - min. recess depth mm
  - max. recess depth mm

35 085 970 90

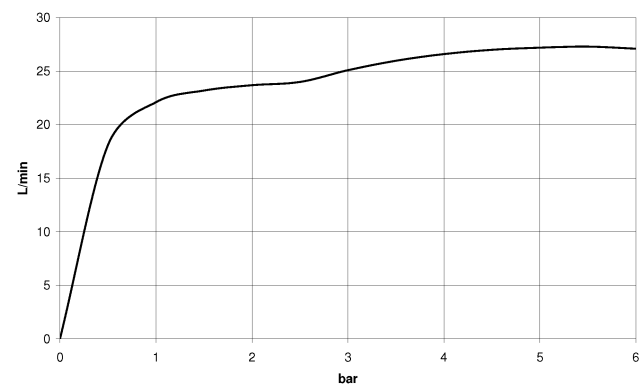
**IMO Bath spout for wall mounting - Matte Black**

13 801 670

mm [inches]



**Flow rate chart**



**Codes & Standards**

ASME A112.18.1      cUPC



## IMO Bath spout for wall mounting - Matte Black

---

13 801 670

### Certificates

---

IAPMO\_4976

## IMO Bath spout for wall mounting - Matte Black

---

13 801 670

