

SYMETRICS Wall-mounted basin spout without pop-up waste - Brushed Platinum

13 805 980



- 220mm projection
- fixed spout
- circular, air-enriched flow
- hole diameter 37 mm
- rosette 60 x 60 mm
- 1/2" connection
- plug-link mounting
- max. flow 7 l/min
- lead-free
- WRAS 1904065

For Touchfree control please order eSet Touchfree
WITH or WITHOUT temperature adjustment

Recommended miscellaneous

Concealed wall elbow -

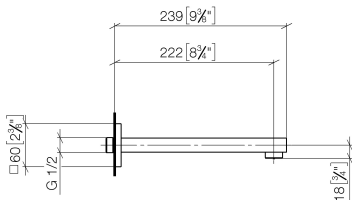
35 085 970 90



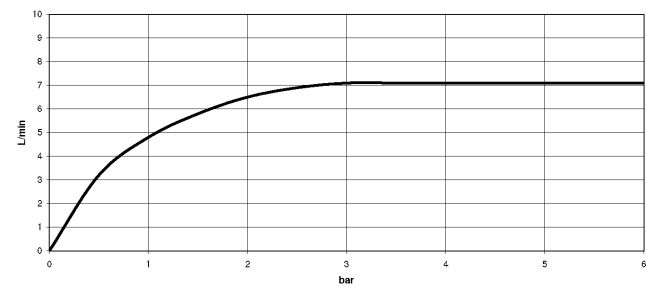
- max. recess depth 163 mm
- min. recess depth 90 mm

**SYMETRICS Wall-mounted basin spout without pop-up waste - Brushed
Platinum**

13 805 980
mm [inches]



Flow rate chart



Certificates

LGA_18593. WRAS_1904065.

SYMETRICS Wall-mounted basin spout without pop-up waste - Brushed Platinum

13 805 980

