

META SQUARE COLD WATER DISPENSER - Brushed Platinum

17 872 861 Product version from 3/1/2025



- 145mm projection
- pivotable spout 360°
- laminar flow
- height of mixer 250 mm
- height up to laminar flow regulator 185 mm
- hole diameter 35 mm
- Provides filtered water
- max. flow 3.8 l/min at 3 bar flow pressure
- mechanical valve
- lead-free
- This product can help a building meet the requirements of Green Building Rating Systems, e.g. LEED®, BREEAM®, DGNB

The filter cartridge must be changed every six months. The installation instructions contain further information for guidance.

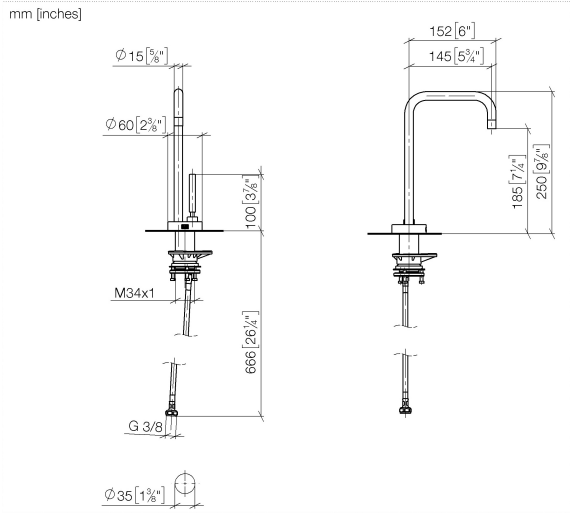
Detailed planning information and technical data can be found at www.dornbracht.com/professional

NOTE: Not compatible with reverse osmosis

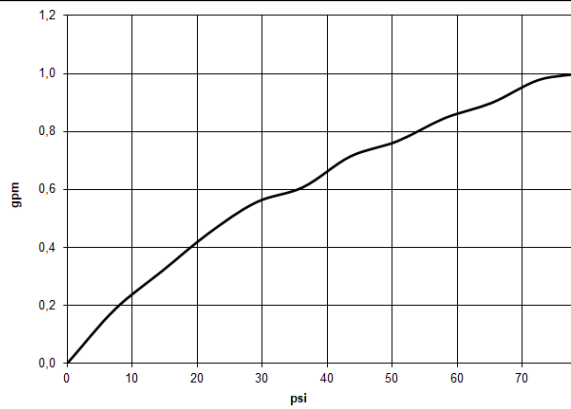
	Brushed Platinum	17 872 861-06
	Chrome	17 872 861-00
	Platinum	17 872 861-08
	Durabronze (23kt Gold)	17 872 861-09
	Dark Chrome	17 872 861-19
	Brushed Durabronze (23kt Gold)	17 872 861-28
	Matte Black	17 872 861-33
	Brushed Bronze	17 872 861-42
	Brushed Champagne (22kt Gold)	17 872 861-46
	Champagne (22kt Gold)	17 872 861-47
	Brushed Chrome	17 872 861-93
	Brushed Dark Platinum	17 872 861-99

META SQUARE COLD WATER DISPENSER - Brushed Platinum

17 872 861 Product version from 3/1/2025



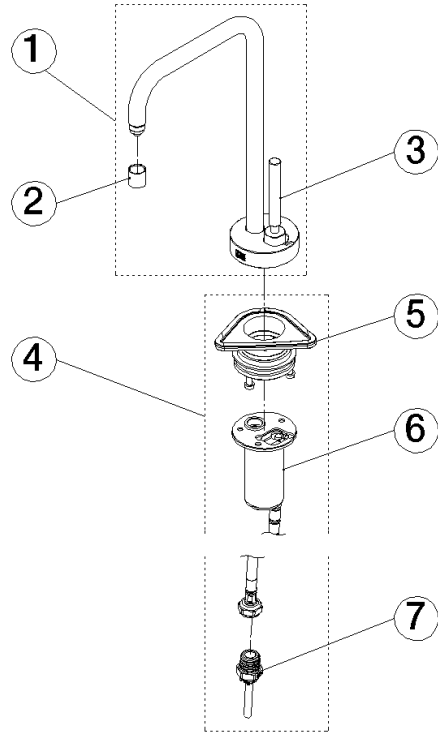
Flow rate chart



META SQUARE COLD WATER DISPENSER - Brushed Platinum

17 872 861 Product version from 3/1/2025

Parts for other
finishes can be found
here: [Chrome](#)



Spare parts list

No.	Item Number	Name	Quantity used	Delivery time
1	90 17 87 286 10-06	spout	1	-
Spare part can no longer be ordered, please order the replacement item				
2	90 17 87 287 50 90	set	1	-
Spare part can no longer be ordered, please order the replacement item				