

## TARA ULTRA COLD WATER DISPENSER - Dark Chrome

17 872 875 Product version from 3/1/2025



- 146mm projection
- pivotable spout 360°
- laminar flow
- height of mixer 290 mm
- height up to laminar flow regulator 182 mm
- hole diameter 35 mm
- Provides filtered water
- max. flow 3.8 l/min at 3 bar flow pressure
- mechanical valve
- lead-free
- This product can help a building meet the requirements of Green Building Rating Systems, e.g. LEED®, BREEAM®, DGNB

The filter cartridge must be changed every six months. The installation instructions contain further information for guidance.

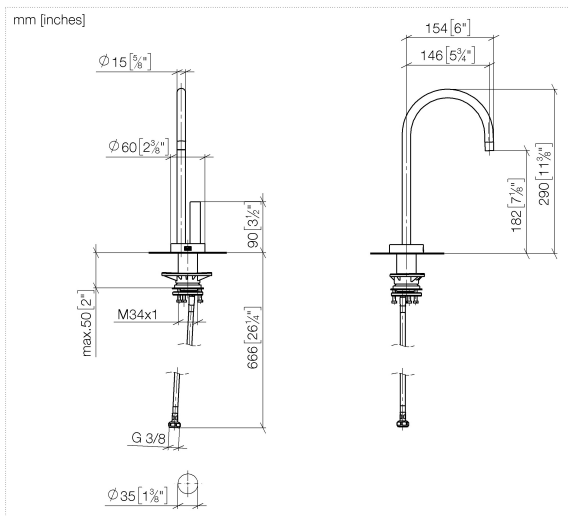
Detailed planning information and technical data can be found at [www.dornbracht.com/professional](http://www.dornbracht.com/professional)

NOTE: Not compatible with reverse osmosis

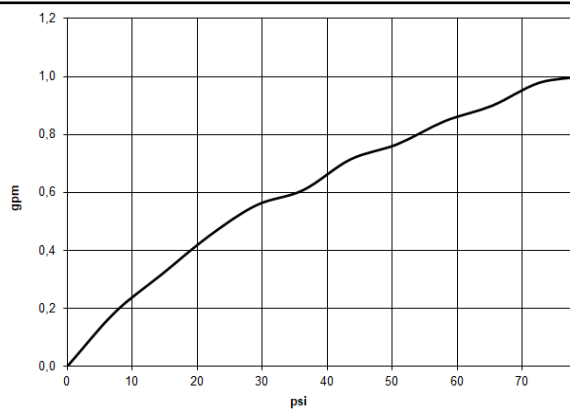
|   |                               |               |
|---|-------------------------------|---------------|
|    | Dark Chrome                   | 17 872 875-19 |
|    | Chrome                        | 17 872 875-00 |
|    | Brushed Platinum              | 17 872 875-06 |
|    | Platinum                      | 17 872 875-08 |
|    | Durabrand (23kt Gold)         | 17 872 875-09 |
|    | Brushed Durabrand (23kt Gold) | 17 872 875-28 |
|    | Matte Black                   | 17 872 875-33 |
|    | Brushed Bronze                | 17 872 875-42 |
|    | Brushed Champagne (22kt Gold) | 17 872 875-46 |
|   | Champagne (22kt Gold)         | 17 872 875-47 |
|  | Brushed Chrome                | 17 872 875-93 |
|  | Brushed Dark Platinum         | 17 872 875-99 |

## TARA ULTRA COLD WATER DISPENSER - Dark Chrome

17 872 875 Product version from 3/1/2025



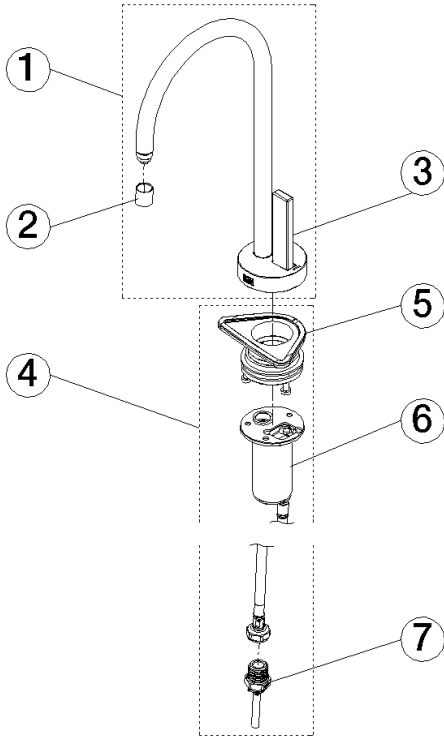
Flow rate chart



TARA ULTRA COLD WATER DISPENSER - Dark Chrome

17 872 875    Product version from 3/1/2025

Parts for other  
 finishes can be found  
 here: [Chrome](#)



Spare parts list

| No.  | Item Number        | Name  | Quantity used | Delivery time |
|--|--------------------|-------|---------------|---------------|
| 1  | 90 17 87 287 50-19 | spout | 1             | -             |
| Spare part can no longer be ordered, please order the replacement item |                    |       |               |               |
| 2  | 90 17 87 287 50 90 | set   | 1             | -             |
| Spare part can no longer be ordered, please order the replacement item |                    |       |               |               |