


# TARA ULTRA COLD WATER DISPENSER - Brushed Dark Platinum

17 872 875    Product version from 3/1/2025

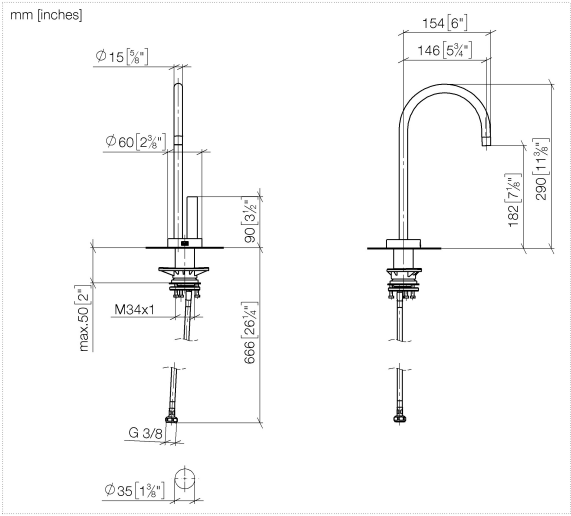


- 146mm projection
  - pivotable spout 360°
  - laminar flow
  - height of mixer 290 mm
  - height up to laminar flow regulator 182 mm
  - hole diameter 35 mm
  - Provides filtered water
  - max. flow 3.8 l/min at 3 bar flow pressure
  - mechanical valve
  - lead-free
  - This product can help a building meet the requirements of Green Building Rating Systems, e.g. LEED®, BREEAM®, DGNB
- The filter cartridge must be changed every six months. The installation instructions contain further information for guidance.
- Detailed planning information and technical data can be found at [www.dornbracht.com/professional](http://www.dornbracht.com/professional)
- NOTE: Not compatible with reverse osmosis

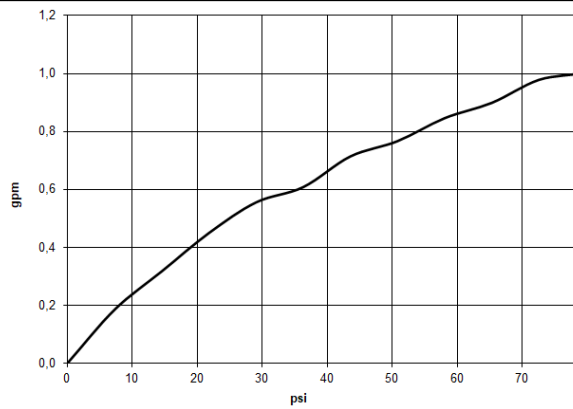
	Brushed Dark Platinum	17 872 875-99
	Chrome	17 872 875-00
	Brushed Platinum	17 872 875-06
	Platinum	17 872 875-08
	Durabrand (23kt Gold)	17 872 875-09
	Dark Chrome	17 872 875-19
	Brushed Durabrand (23kt Gold)	17 872 875-28
	Matte Black	17 872 875-33
	Brushed Bronze	17 872 875-42
	Brushed Champagne (22kt Gold)	17 872 875-46
	Champagne (22kt Gold)	17 872 875-47
	Brushed Chrome	17 872 875-93

**TARA ULTRA COLD WATER DISPENSER - Brushed Dark Platinum**

17 872 875    Product version from 3/1/2025



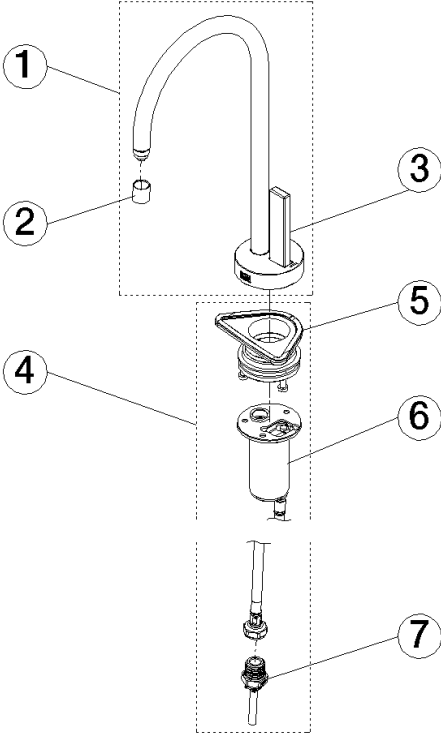
**Flow rate chart**



TARA ULTRA COLD WATER DISPENSER - Brushed Dark Platinum

17 872 875    Product version from 3/1/2025

Parts for other  
finishes can be found  
here: [Chrome](#)



Spare parts list

No.	Item Number	Name	Quantity used	Delivery time
1	90 17 87 287 50-99	spout	1	-
Spare part can no longer be ordered, please order the replacement item				
2	90 17 87 287 50 90	set	1	-
Spare part can no longer be ordered, please order the replacement item				