

TARA COLD WATER DISPENSER - Brushed Dark Platinum

17 872 888 Product version from 3/1/2025



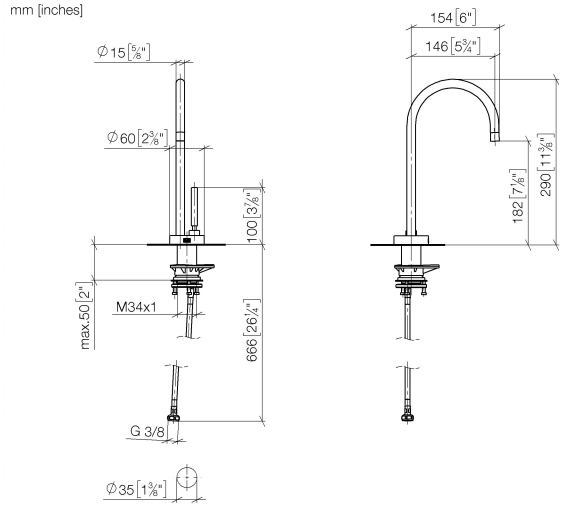
- 146mm projection
 - pivotable spout 360°
 - laminar flow
 - height of mixer 290 mm
 - height up to laminar flow regulator 182 mm
 - hole diameter 35 mm
 - Provides filtered water
 - max. flow 3.8 l/min at 3 bar flow pressure
 - mechanical valve
 - lead-free
 - This product can help a building meet the requirements of Green Building Rating Systems, e.g. LEED®, BREEAM®, DGNB
- The filter cartridge must be changed every six months. The installation instructions contain further information for guidance.
- Detailed planning information and technical data can be found at www.dornbracht.com/professional
- NOTE: Not compatible with reverse osmosis

	Brushed Dark Platinum	17 872 888-99
	Chrome	17 872 888-00
	Brushed Platinum	17 872 888-06
	Platinum	17 872 888-08
	Durabrass (23kt Gold)	17 872 888-09
	Dark Chrome	17 872 888-19
	Brushed Durabrass (23kt Gold)	17 872 888-28
	Matte Black	17 872 888-33
	Brushed Bronze	17 872 888-42
	Brushed Champagne (22kt Gold)	17 872 888-46
	Champagne (22kt Gold)	17 872 888-47
	Brushed Chrome	17 872 888-93

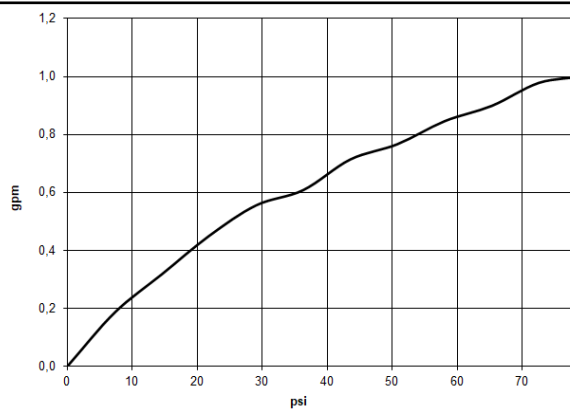
TARA COLD WATER DISPENSER - Brushed Dark Platinum

17 872 888 Product version from 3/1/2025

mm [inches]



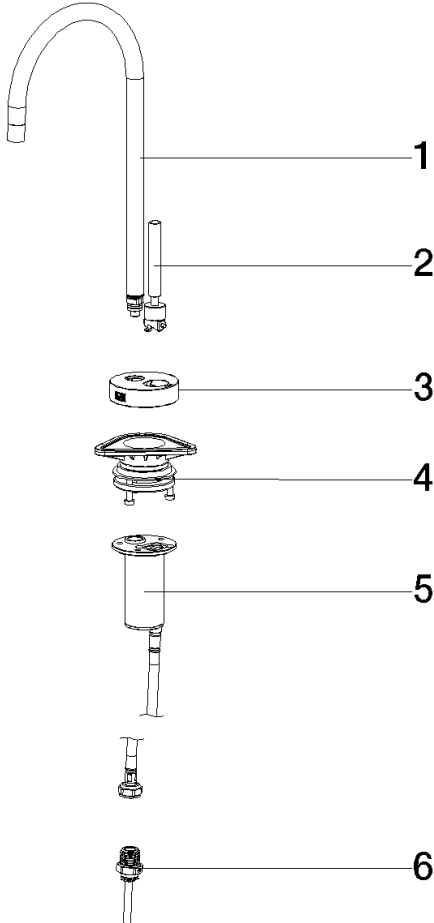
Flow rate chart



TARA COLD WATER DISPENSER - Brushed Dark Platinum

17 872 888 Product version from 3/1/2025

Parts for other
finishes can be found
here: [Chrome](#)



Spare parts list

No.	Item Number	Name	Quantity used	Delivery time
1	90 17 87 288 80-99	spout	1	-
Spare part can no longer be ordered, please order the replacement item				
2	90 17 87 287 50 90	set	1	-
Spare part can no longer be ordered, please order the replacement item				