

# Deck valve clockwise closing cold - Dark Chrome

20 000 740    Product version from 4/1/2023



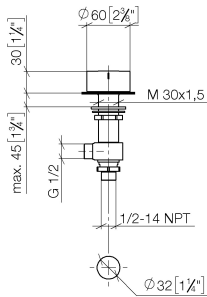
- hole diameter 32 mm
- handle Ø 60mm
- without rosette
- with cold marking
- WRAS

|   |                               |               |
|---|-------------------------------|---------------|
|  | Dark Chrome                   | 20 000 740-19 |
|  | Chrome                        | 20 000 740-00 |
|  | Brushed Platinum              | 20 000 740-06 |
|  | Platinum                      | 20 000 740-08 |
|  | Brushed Durabrass (23kt Gold) | 20 000 740-28 |
|  | Matte Black                   | 20 000 740-33 |
|  | Brushed Champagne (22kt Gold) | 20 000 740-46 |
|  | Champagne (22kt Gold)         | 20 000 740-47 |
|  | Brushed Dark Platinum         | 20 000 740-99 |

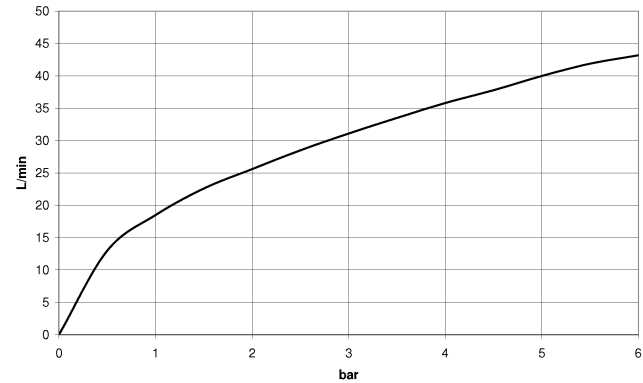
Deck valve clockwise closing cold - Dark Chrome

20 000 740    Product version from 4/1/2023

mm [inches]



Flow rate chart



Codes & Standards

|                        |                             |           |          |
|------------------------|-----------------------------|-----------|----------|
| ASME A112.18.1         | cUPC                        | DIN 4109  | ISO 3822 |
| Scottish Water Byelaws | UK Water Supply Regulations | Ü-Zeichen |          |



Deck valve clockwise closing cold - Dark Chrome

---

20 000 740 Product version from 4/1/2023

Certificates

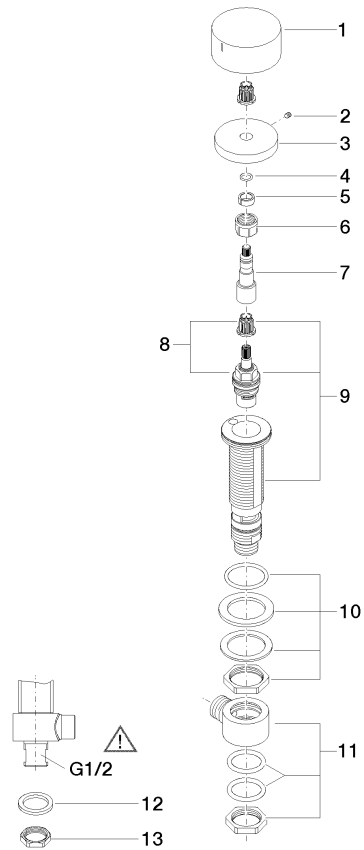
---

|            |           |        |
|------------|-----------|--------|
| IAPMO_4976 | WRAS_2103 | LGA_28 |
|------------|-----------|--------|

## Deck valve clockwise closing cold - Dark Chrome

20 000 740 Product version from 4/1/2023

Parts for other  
finishes can be found  
here: [Chrome](#)



## Spare parts list

| No. | Item Number        | Name            | Quantity used | Delivery time |
|-----|--------------------|-----------------|---------------|---------------|
| 1   | 09 20 74 005-19    | handle ( cold ) | 1             | 60            |
| 2   | 90 31 11 007 00 90 | pin             | 1             | 2             |
| 3   | 09 27 74 003-19    | rosette         | 1             | 60            |
| 4   | 90 14 10 060 00 90 | seal            | 1             | 2             |
| 5   | 90 14 15 020 03 90 | ring            | 1             | 2             |
| 6   | 90 23 30 023 00 90 | nut             | 1             | 2             |
| 7   | 09 29 06 107-00    | spindle         | 1             | 10            |
| 8   | 90 90 03 133 00 90 | top             | 1             | 2             |
| 9   | 04 17 11 058 33 90 | side panel      | 1             | 2             |
| 10  | 04 23 10 032 78 90 | fixing set      | 1             | 2             |
| 11  | 04 17 11 023 10 90 | distributor     | 1             | 2             |
| 12  | 09 30 11 059 90    | disc            | 1             | 2             |
| 13  | 09 23 10 012 90    | nut             | 1             | 2             |