

TARA Deck valve clockwise closing cold or hot - Brushed Champagne (22kt Gold)

TARA

20 000 892



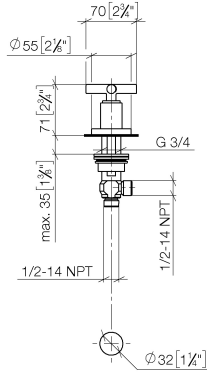
- hole diameter 32 mm
- rosette Ø 55 mm
- WRAS 2112061

	Brushed Champagne (22kt Gold)	20 000 892-46
	Chrome	20 000 892-00
	Brushed Platinum	20 000 892-06
	Platinum	20 000 892-08
	Dark Chrome	20 000 892-19
	Brushed Durabronze (23kt Gold)	20 000 892-28
	Matte Black	20 000 892-33
	Brushed Bronze	20 000 892-42
	Champagne (22kt Gold)	20 000 892-47
	Brushed Chrome	20 000 892-93
	Brushed Dark Platinum	20 000 892-99

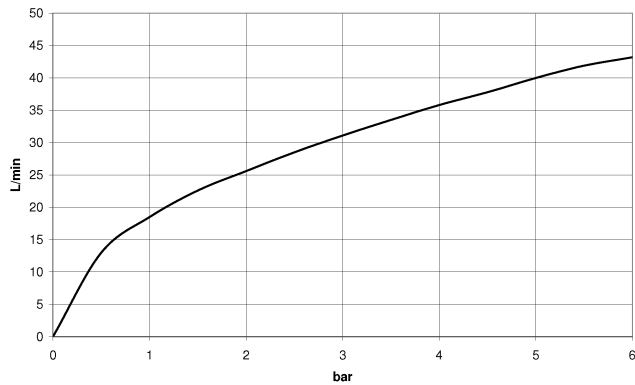
TARA Deck valve clockwise closing cold or hot - Brushed Champagne (22kt Gold)

TARA

20 000 892
mm [inches]



Flow rate chart



Codes & Standards

Scottish Water
Byelaws

UK Water Supply
Regulations



TARA Deck valve clockwise closing cold or hot - Brushed Champagne (22kt Gold)

TARA

20 000 892

Certificates

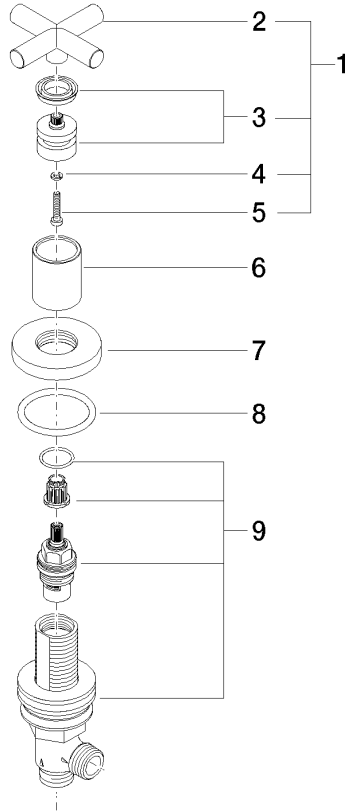
WRAS_2112

TARA Deck valve clockwise closing cold or hot - Brushed Champagne (22kt Gold)

TARA

20 000 892

Parts for other
finishes can be found
here: [Chrome](#)





TARA Deck valve clockwise closing cold or hot - Brushed Champagne (22kt Gold)

TARA

20 000 892

Spare parts list

No.	Item Number	Name	Quantity used	Delivery time
	90 20 89 010 10-46	handle	9	30