

MADISON Three-hole basin mixer with pop-up waste - Platinum



MADISON

20 700 360 Product version from 7/31/2009



- 135mm projection
- fixed spout
- circular, air-enriched flow
- height of mixer 72 mm
- height up to aerator 40 mm
- hole diameter valve 32 mm
- hole diameter spout 35 mm
- without rosette
- 2x 1/2" x 1/2" high pressure hose
- max. flow 7 l/min
- lead-free
- This product can help a building meet the requirements of Green Building Rating Systems, e.g. LEED®, BREEAM®, DGNB
- WRAS

Only suitable for basins with an overflow.

| | | |
|---|-------------------------------|---------------|
|  | Platinum | 20 700 360-08 |
|  | Chrome | 20 700 360-00 |
|  | Brushed Platinum | 20 700 360-06 |
|  | Durabrand (23kt Gold) | 20 700 360-09 |
|  | Brushed Durabrand (23kt Gold) | 20 700 360-28 |
|  | Brushed Dark Platinum | 20 700 360-99 |

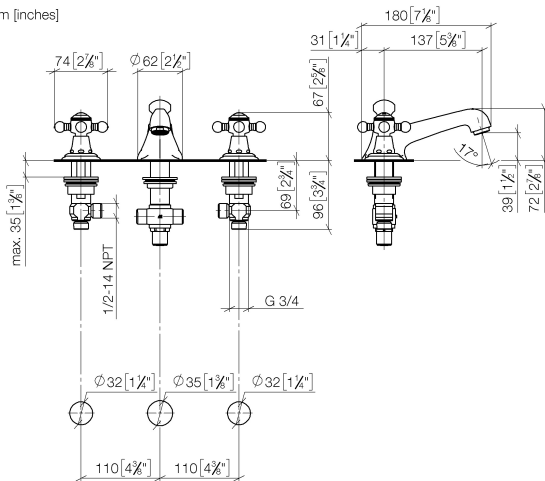
Recommended miscellaneous



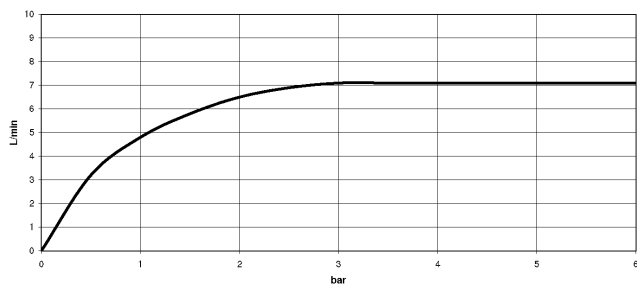
High pressure hoses - 12 506 970 90
 • 2x 3/8" x 1/2" x 500mm high pressure hose

20 700 360 Product version from 7/31/2009

mm [inches]



Flow rate chart



Codes & Standards

| | | | |
|---------------------------|--------------------------------|-----------------------------|------------|
| DIN 4109 | EN 200 | Executive Order no. 1007 | ISO 3822 |
| Scottish Water Byelaws | UK Water Supply Regulations | Ü-Zeichen | VA-Zeichen |



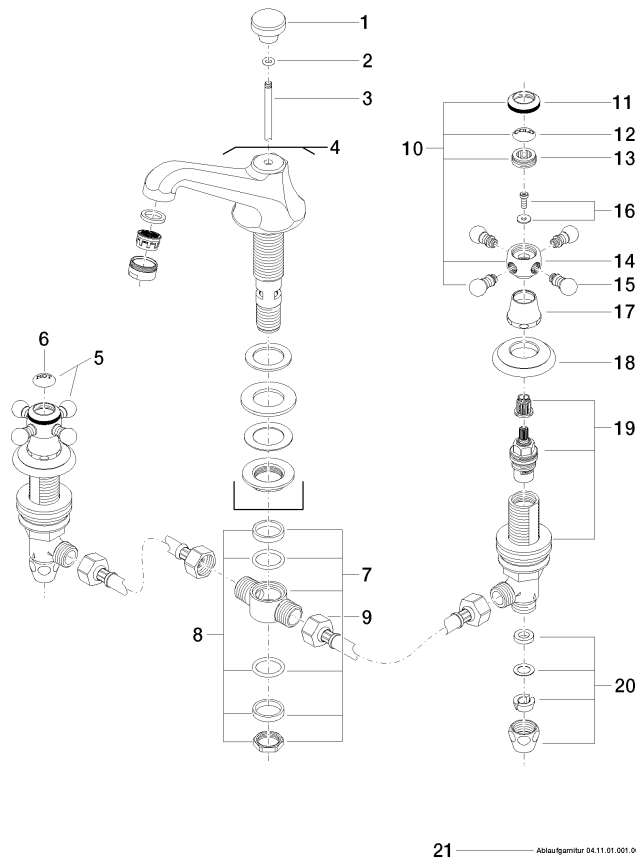
MADISON Three-hole basin mixer with pop-up waste - Platinum

MADISON

20 700 360 Product version from 7/31/2009

Certificates

| | | | | |
|----------|--------|-----------|-------|-------------|
| GDV_0400 | ETA_17 | WRAS_1512 | LGA_8 | WRAS_240602 |
|----------|--------|-----------|-------|-------------|



21 ————— Ablaufgarnitur 04.11.01.001.00.FP

Spare parts list

| No. | Item Number | Name | Quantity used | Delivery time |
|-----|--------------------|--------------------|---------------|---------------|
| 1 | 09 20 36 030-08 | handle | 1 | 40 |
| 2 | 90 14 10 062 00 90 | seal | 1 | 2 |
| 3 | 09 31 09 004-08 | pull-rod | 1 | 40 |
| 4 | 13 700 380-08 | spout | 1 | 40 |
| 5 | 04 20 36 002 07-08 | handle (hot) | 1 | 40 |
| 6 | 09 26 01 011 90 | accessories | 1 | 2 |
| 7 | 90 17 11 020 10 90 | distributor | 1 | 2 |
| 8 | 90 23 10 012 00 90 | gasket kit | 1 | 2 |
| 9 | 04 30 04 096 00 90 | hose | 2 | 2 |
| 10 | 04 20 36 002 06-08 | handle (cold) | 1 | 40 |
| 11 | 09 20 36 005-08 | handle | 2 | 40 |
| 12 | 09 26 01 010 90 | accessories | 1 | 2 |
| 13 | 09 20 83 006 90 | handle | 2 | 2 |
| 14 | 09 20 36 002-08 | handle | 2 | 40 |
| 15 | 09 20 36 004-08 | handle | 8 | 40 |
| 16 | 04 30 30 029 00 90 | fixing set | 2 | 2 |
| 17 | 09 21 02 055-08 | cover | 2 | 40 |
| 18 | 09 27 35 001-08 | rosette | 2 | 40 |
| 19 | 90 17 11 040 51 90 | side panel | 2 | 2 |
| 20 | 90 23 30 040 00-08 | threaded connector | 2 | 40 |
| 21 | 90 11 01 001 00-08 | pop-up waste | 1 | 40 |