

TARA Three-hole mixer - Dark Chrome

20 816 892 Product version from 4/1/2024



- 235mm projection
- pivotable spout 360°
- air-enriched flow
- height of mixer 370 mm
- height up to aerator 212 mm
- hole diameter spout 35 mm
- hole diameter valve 32 mm
- max. flow 7 l/min at 3 bar flow pressure
- lead-free
- This product can help a building meet the requirements of Green Building Rating Systems, e.g. LEED®, BREEAM®, DGNB

| | | |
|---|-------------------------------|---------------|
|  | Dark Chrome | 20 816 892-19 |
|  | Chrome | 20 816 892-00 |
|  | Brushed Platinum | 20 816 892-06 |
|  | Platinum | 20 816 892-08 |
|  | Durabrass (23kt Gold) | 20 816 892-09 |
|  | Brushed Durabrass (23kt Gold) | 20 816 892-28 |
|  | Matte Black | 20 816 892-33 |
|  | Brushed Bronze | 20 816 892-42 |
|  | Brushed Champagne (22kt Gold) | 20 816 892-46 |
|  | Champagne (22kt Gold) | 20 816 892-47 |
|  | Brushed Chrome | 20 816 892-93 |
|  | Brushed Dark Platinum | 20 816 892-99 |

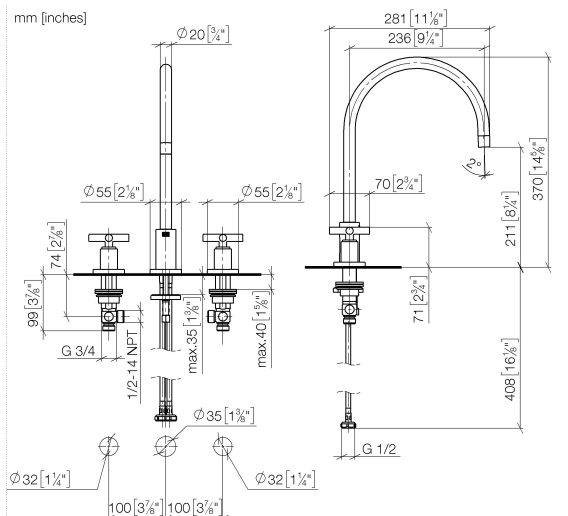
Recommended miscellaneous

Strainer waste with control handle 10 710 970-19
- Dark Chrome

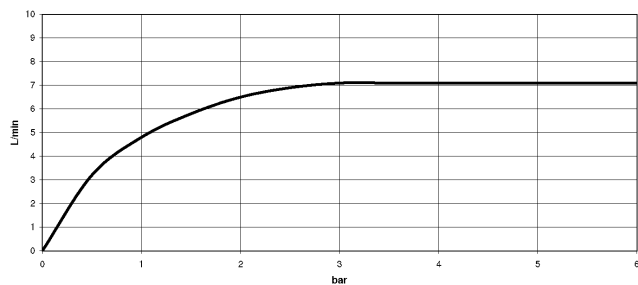


TARA Three-hole mixer - Dark Chrome

20 816 892 Product version from 4/1/2024



Flow rate chart



Codes & Standards

DIN 4109

ISO 3822

Ü-Zeichen



TARA Three-hole mixer - Dark Chrome

20 816 892 Product version from 4/1/2024

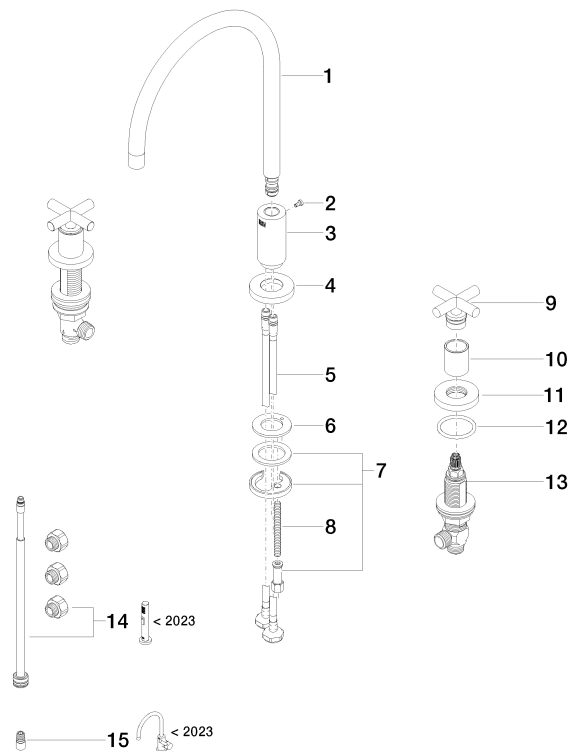
Certificates

LGA_38

TARA Three-hole mixer - Dark Chrome

20 816 892 Product version from 4/1/2024

Parts for other
finishes can be found
here: [Chrome](#)



Spare parts list

| No. | Item Number | Name | Quantity used | Delivery time |
|-----|--------------------|----------------|---------------|---------------|
| 1 | 90 28 22 226 01-19 | spout | 1 | 20 |
| 2 | 09 30 30 057 90 | screw | 1 | 2 |
| 3 | 09 11 10 088 10-19 | connection | 1 | 60 |
| 4 | 09 28 10 140-19 | ring | 1 | 60 |
| 5 | 04 30 04 019 00 90 | hose | 2 | 2 |
| 6 | 09 14 05 047 90 | seal | 1 | 2 |
| 7 | 04 30 11 038 00 90 | fixing set | 1 | 2 |
| 8 | 09 31 11 011 90 | pin | 1 | 2 |
| 9 | 90 20 89 010 10-19 | handle | 2 | 20 |
| 10 | 09 21 02 140-19 | sleeve | 2 | 20 |
| 11 | 09 27 89 105-19 | rosette | 2 | 20 |
| 12 | 90 14 10 043 00 90 | seal | 2 | 2 |
| 13 | 90 17 11 040 51 90 | side panel | 2 | 2 |
| 14 | 90 17 09 046 13 90 | conversion kit | 1 | 2 |
| 15 | 90 24 03 537 01 90 | adaptor | 1 | 2 |