

TARA Single-hole mixer - Matte Black

TARA

22 815 892



- 235mm projection
- pivotable spout 360°
- air-enriched flow
- height of mixer 378 mm
- height up to aerator 220 mm
- hole diameter 35 mm
- max. flow 7 l/min at 3 bar flow pressure
- lead-free
- This product can help a building meet the requirements of Green Building Rating Systems, e.g. LEED®, BREEAM®, DGNB
- WRAS 1810003

| | | |
|--|--------------------------------|---------------|
|  | Matte Black | 22 815 892-33 |
|  | Chrome | 22 815 892-00 |
|  | Brushed Platinum | 22 815 892-06 |
|  | Platinum | 22 815 892-08 |
|  | Durabronze (23kt Gold) | 22 815 892-09 |
|  | Dark Chrome | 22 815 892-19 |
|  | Brushed Durabronze (23kt Gold) | 22 815 892-28 |
|  | Brushed Champagne (22kt Gold) | 22 815 892-46 |
|  | Champagne (22kt Gold) | 22 815 892-47 |
|  | Brushed Chrome | 22 815 892-93 |
|  | Brushed Dark Platinum | 22 815 892-99 |

Recommended miscellaneous

Dispenser with rosette - Matte Black 82 444 970-33



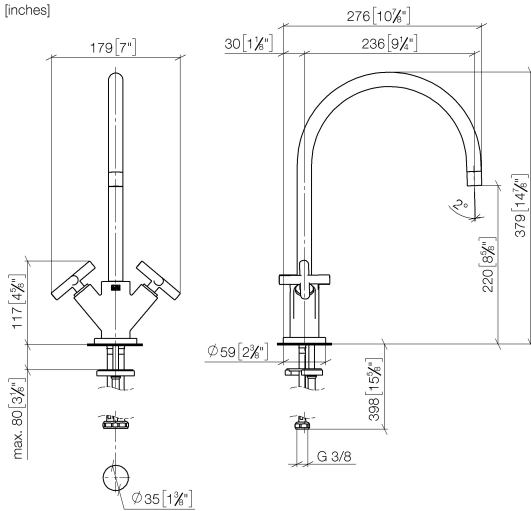
Recommended miscellaneous

Strainer waste with control handle - Matte Black 10 710 970-33

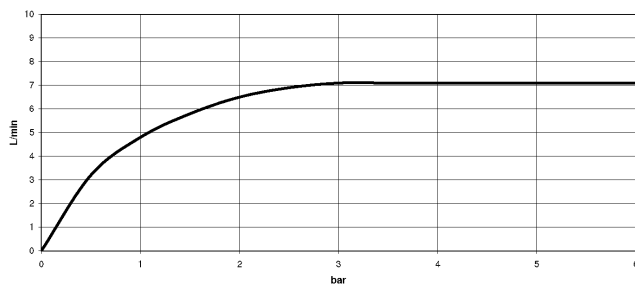


22 815 892

mm [inches]



Flow rate chart



Codes & Standards

| | | | |
|---------------------------|--------------------------------|-----------------------------|------------|
| DIN 4109 | EN 200 | Executive Order no. 1007 | ISO 3822 |
| Scottish Water Byelaws | UK Water Supply Regulations | Ü-Zeichen | VA-Zeichen |



TARA Single-hole mixer - Matte Black

TARA

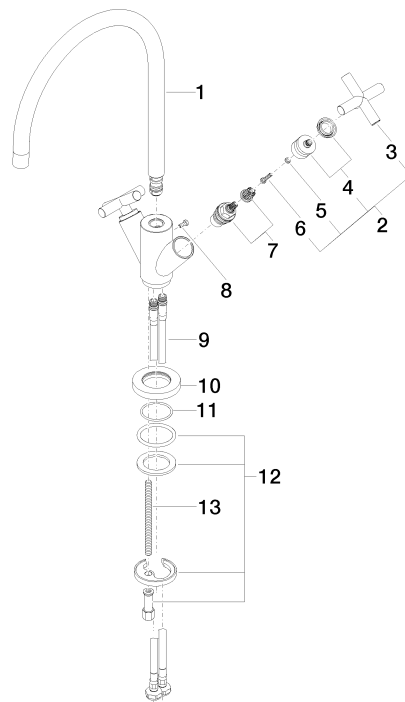
22 815 892

Certificates

| | | | |
|----------|--------|--------|-----------|
| GDV_0400 | LGA_19 | ETA_18 | WRAS_1810 |
|----------|--------|--------|-----------|

Product version from 5/27/2021

Parts for other
finishes can be found
here: [Chrome](#)





TARA Single-hole mixer - Matte Black

TARA

22 815 892

Spare parts list

Product version from 5/27/2021

| No. | Item Number | Name | Quantity used | Delivery time |
|-----|--------------------|-------|---------------|---------------|
| | 90 28 22 226 01-33 | spout | 20 | 2 |