

TARA Two-hole bath mixer for free-standing assembly with hand shower set - Chrome

TARA

25 943 882



- 220mm projection
- pivotable spout 180°
- spout: circular, air-enriched flow
- Hand shower: COMPACT RAIN, max. flow rate 6.8 l/min (at 3 bar)
- hand shower with anti-scale system
- rotary diverter for bath/shower
- total height 920 mm
- stand pipes height 628 mm
- height up to aerator 765 mm
- slide-on rosettes Ø 90 mm
- gauge 150 mm
- metal shower hose 1250mm with integrated anti-twist protection
- pivotable shower holder on the right foot
- max. flow 22 l/min at 3 bar flow pressure
- Intrinsic protection against back flow.**

Intrinsic protection against back flow.

	Chrome	25 943 882-00 0050
	Brushed Platinum	25 943 882-06 0050
	Platinum	25 943 882-08 0050
	Dark Chrome	25 943 882-19 0050
	Brushed Durabronze (23kt Gold)	25 943 882-28 0050
	Matte Black	25 943 882-33 0050
	Brushed Bronze	25 943 882-42 0050
	Brushed Champagne (22kt Gold)	25 943 882-46 0050
	Champagne (22kt Gold)	25 943 882-47 0050
	Brushed Chrome	25 943 882-93 0050
	Brushed Dark Platinum	25 943 882-99 0050

Required miscellaneous



Concealed floor mounting -

35 944 970 90

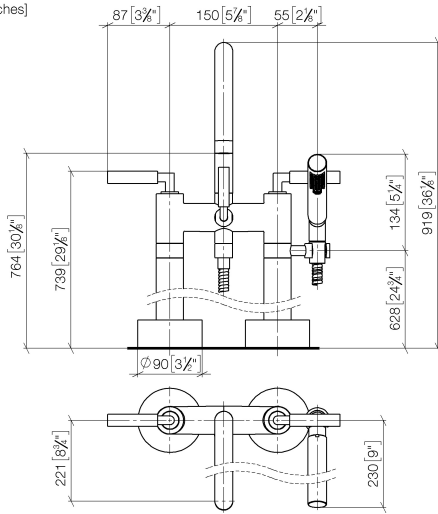
- max. recess depth 160 mm
- min. recess depth 80 mm

TARA Two-hole bath mixer for free-standing assembly with hand shower set - Chrome

TARA

25 943 882

mm [inches]

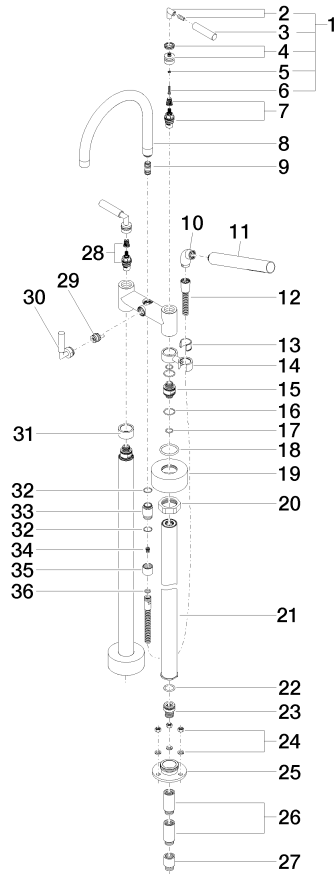


TARA Two-hole bath mixer for free-standing assembly with hand shower set - Chrome

TARA

25 943 882

Product version from 7/1/2022





TARA Two-hole bath mixer for free-standing assembly with hand shower set -
Chrome

TARA

25 943 882

Spare parts list

Product version from 7/1/2022

No.	Item Number	Name	Quantity used	Delivery time
	04 20 88 052 00-00	handle	63	10