



Rain shower:

- rain shower Ø 220 mm
- overhead shower: rain flow
- max. rainshower flow 7 l/min
- Function from: l/min

hand shower:

Control element:

- rotary diverter for fixed-riser shower/hand shower
- 1500 mm metal shower hose

Technical data:

- shower with fixed riser projection 420mm
- height of fittings up to rain shower (bottom edge) 850mm
- height of fittings up to top edge of elbow 1167mm
- rosette for wall mounting Ø 57mm
- rosette for shower mixer Ø 65mm
- rosette for shower holder Ø 55mm
- Pipe diameter 20 mm
- gauge 150 mm - 13 mm
- 1/2" connection

Notes:

- This product can help a building meet the requirements of Green Building Rating Systems, e.g. LEED®, BREEAM®, DGNB

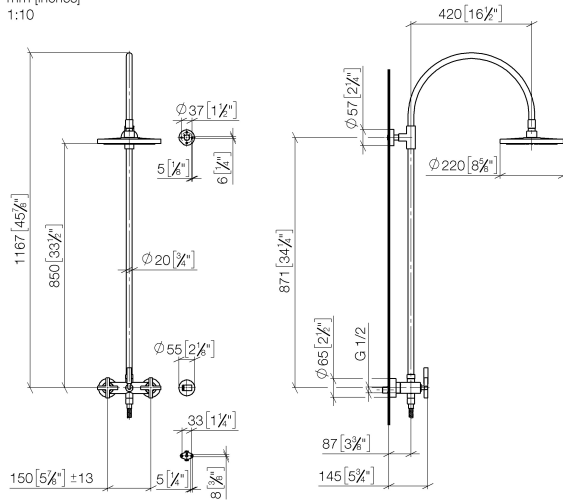
This article does not include a hand shower!

Intrinsic protection against back flow.

	Platinum	26 632 892-08 0050
	Chrome	26 632 892-00 0050
	Brushed Platinum	26 632 892-06 0050
	Dark Chrome	26 632 892-19 0050
	Brushed Light Gold	26 632 892-27 0050
	Brushed Durabrass (23kt Gold)	26 632 892-28 0050
	Matte Black	26 632 892-33 0050
	Brushed Bronze	26 632 892-42 0050
	Brushed Champagne (22kt Gold)	26 632 892-46 0050
	Champagne (22kt Gold)	26 632 892-47 0050
	Brushed Chrome	26 632 892-93 0050
	Brushed Dark Platinum	26 632 892-99 0050

26 632 892 Product version from 7/1/2022

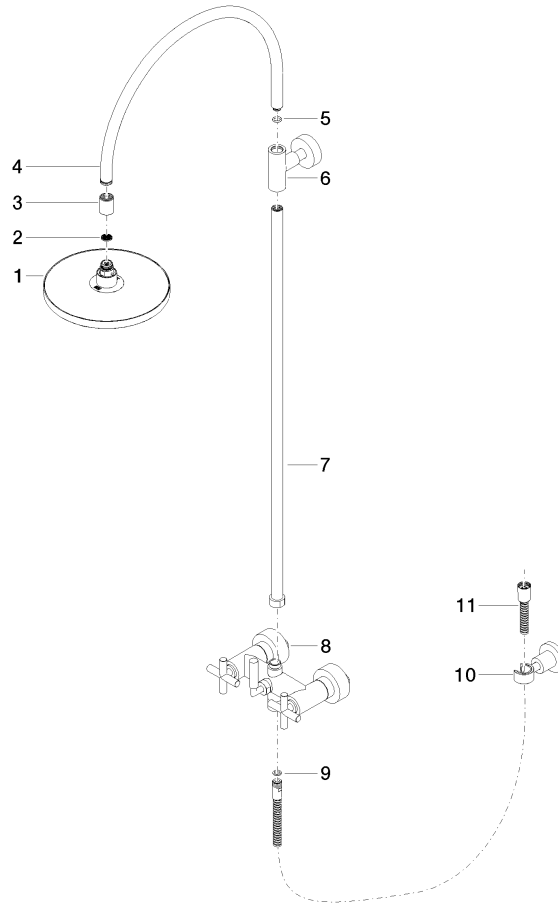
mm [inches]
1:10



Flow rate chart



Parts for other finishes can be found here: [Chrome](#)



Spare parts list

No.	Item Number	Name	Quantity used	Delivery time
4	04 28 22 097 20-08	spout	1.00	40
6	90 17 11 037 00-08	holder	1.00	-
Spare part can no longer be ordered, please order the replacement item				
2	09 23 01 039 90	sieve	1.00	2
8	04 17 10 020 01-08	fitting	1.00	40
3	09 24 03 177 20-08	adaptor	1.00	40
11	28 304 970-08	Metal shower hose 1/2" x 3/8" x 1500 mm - Platinum	1.00	40
7	90 28 22 096 00-08	pipe	1.00	-
Spare part can no longer be ordered, please order the replacement item				
10	28 050 892-08	TARA Wall bracket - Platinum	1.00	40
9	90 14 20 026 00 90	seal	1.00	2
5	90 14 10 011 00 90	seal	1.00	2
1	90 12 05 092 00-08	shower	1.00	40