

TARA Showerpipe with shower mixer without hand shower 220 mm - Brushed Champagne (22kt Gold)

TARA

26 632 892



- shower with fixed riser projection 420mm
- overhead shower: rain flow
- rain shower Ø 220 mm
- rain shower with anti-scale system
- max. rainshower flow 7 l/min
- rotary diverter for fixed-riser shower/hand shower
- height of fittings up to rain shower (bottom edge) 850mm
- height of fittings up to top edge of elbow 1167mm
- rosette for shower holder Ø 55mm
- rosette for wall mounting Ø 57mm
- rosette for shower mixer Ø 65mm
- gauge 150 mm - 13 mm
- 1500 mm metal shower hose
- 1/2" connection
- Pipe diameter 20 mm
- quick clearing
- This product can help a building meet the requirements of Green Building Rating Systems, e.g. LEED®, BREEAM®, DGNB

This article does not include a hand shower!

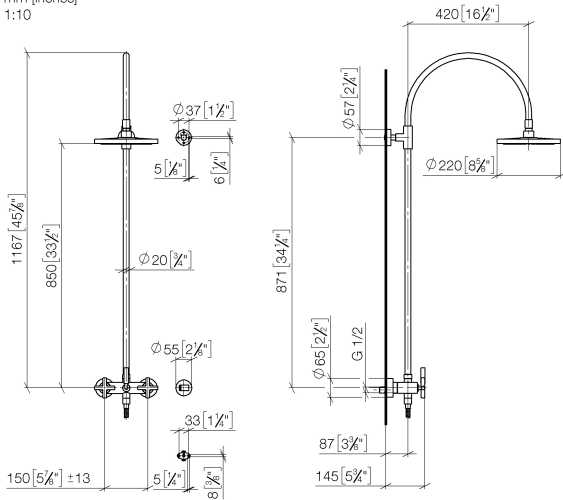
Intrinsic protection against back flow.

| | | |
|--|-------------------------------|--------------------|
|  | Brushed Champagne (22kt Gold) | 26 632 892-46 0050 |
|  | Chrome | 26 632 892-00 0050 |
|  | Brushed Platinum | 26 632 892-06 0050 |
|  | Platinum | 26 632 892-08 0050 |
|  | Dark Chrome | 26 632 892-19 0050 |
|  | Brushed Light Gold | 26 632 892-27 0050 |
|  | Brushed Durabrass (23kt Gold) | 26 632 892-28 0050 |
|  | Matte Black | 26 632 892-33 0050 |
|  | Brushed Bronze | 26 632 892-42 0050 |
|  | Champagne (22kt Gold) | 26 632 892-47 0050 |
|  | Brushed Chrome | 26 632 892-93 0050 |
|  | Brushed Dark Platinum | 26 632 892-99 0050 |

TARA Showerpipe with shower mixer without hand shower 220 mm - Brushed Champagne (22kt Gold)

TARA

26 632 892
mm [inches]
1:10



Flow rate chart



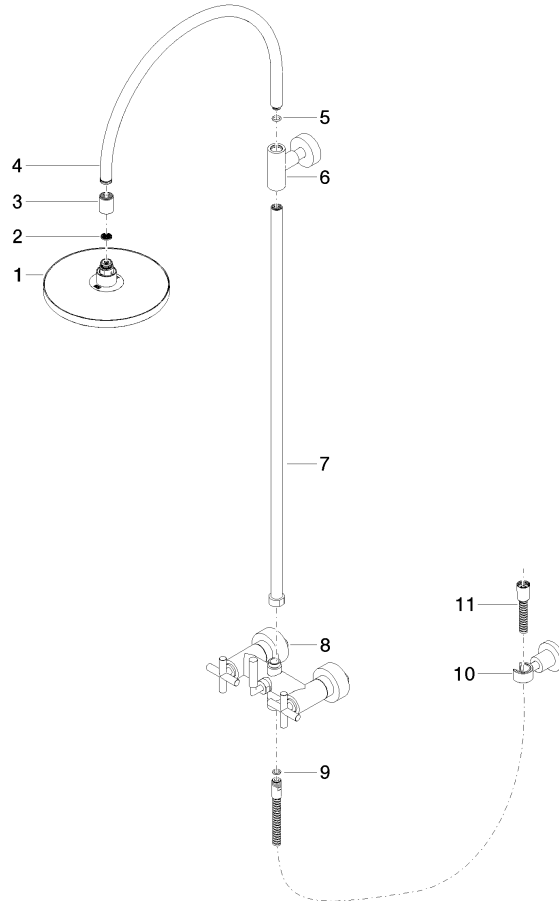
TARA Showerpipe with shower mixer without hand shower 220 mm - Brushed Champagne (22kt Gold)

TARA

26 632 892

Product version from 7/1/2022

Parts for other
finishes can be found
here: [Chrome](#)





TARA Showerpipe with shower mixer without hand shower 220 mm - Brushed
Champagne (22kt Gold)

TARA

26 632 892

Spare parts list

Product version from 7/1/2022

| No. | Item Number | Name | Quantity used | Delivery time |
|-----|--------------------|----------------|---------------|---------------|
| | 90 12 05 092 00-46 | 90120509200-46 | 11 | 60 |