

## TARA Showerpipe without hand shower 220 mm - Brushed Bronze

TARA

26 633 892



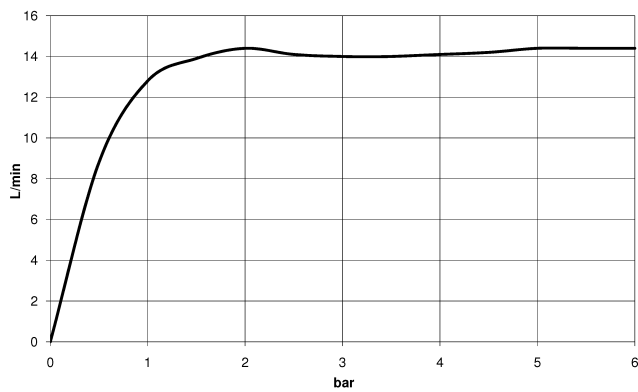
- shower with fixed riser projection 420mm
- overhead shower: rain flow
- rain shower Ø 220 mm
- rain shower with anti-scale system
- max. rainshower flow 14 l/min
- rotary diverter for fixed-riser shower/hand shower
- height of fittings up to rain shower (bottom edge) 1007mm
- height of fittings up to top edge of elbow 1167mm
- rosette for shower holder Ø 55mm
- rosette for wall mounting Ø 57mm
- rosette for shower mixer Ø 65mm
- gauge 150 mm - 13 mm
- 1500 mm metal shower hose
- 1/2" connection
- Pipe diameter 20 mm
- quick clearing
- This product can help a building meet the requirements of Green Building Rating Systems, e.g. LEED®, BREEAM®, DGNB

This article does not include a hand shower!

Intrinsic protection against back flow.

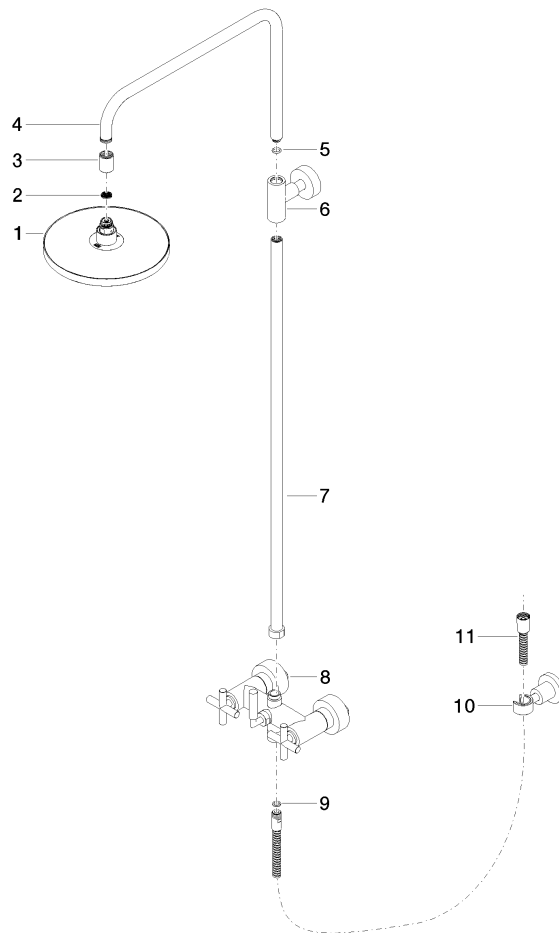
	Brushed Bronze	26 633 892-42 0050
	Chrome	26 633 892-00 0050
	Brushed Platinum	26 633 892-06 0050
	Platinum	26 633 892-08 0050
	Dark Chrome	26 633 892-19 0050
	Brushed Durabronze (23kt Gold)	26 633 892-28 0050
	Matte Black	26 633 892-33 0050
	Brushed Champagne (22kt Gold)	26 633 892-46 0050
	Champagne (22kt Gold)	26 633 892-47 0050
	Brushed Chrome	26 633 892-93 0050
	Brushed Dark Platinum	26 633 892-99 0050

Flow rate chart



**Product version from 7/1/2022**

Parts for other  
finishes can be found  
here: [Chrome](#)





## TARA Showerpipe without hand shower 220 mm - Brushed Bronze

TARA

26 633 892

### Spare parts list

#### Product version from 7/1/2022

No.	Item Number	Name	Quantity used	Delivery time
	90 12 05 092 00-42	90120509200-42	11	60