

Bidet spray - Brushed Bronze

SERIES-VARIOUS


27 701 970 Product version from 10/1/2023



- wall bracket with integrated safety shut off valve
- max. standing pressure: 5bar
- hand shower with back flow preventer
- 1/2" shower outlet
- rosette Ø 60 mm
- metal shower hose 1250mm with integrated anti-twist protection

This product does not provide intrinsic protection against backflow in accordance with DIN EN 1717. This product must not be installed and operated in countries where compliance with DIN EN 1717 is stipulated.

The bidet shower must be operated with an upstream main fitting.

| | | |
|---|--------------------------------|---------------|
|  | Brushed Bronze | 27 701 970-42 |
|  | Chrome | 27 701 970-00 |
|  | Brushed Platinum | 27 701 970-06 |
|  | Platinum | 27 701 970-08 |
|  | Durabronze (23kt Gold) | 27 701 970-09 |
|  | Dark Chrome | 27 701 970-19 |
|  | Light Gold | 27 701 970-26 |
|  | Brushed Light Gold | 27 701 970-27 |
|  | Brushed Durabronze (23kt Gold) | 27 701 970-28 |
|  | Brushed Dark Bronze | 27 701 970-39 |
|  | Brushed Champagne (22kt Gold) | 27 701 970-46 |
|  | Champagne (22kt Gold) | 27 701 970-47 |
|  | Brushed Chrome | 27 701 970-93 |
|  | Brushed Dark Platinum | 27 701 970-99 |

Recommended miscellaneous

Concealed wall elbow -

35 085 970 90

- min. recess depth 90 mm
- max. recess depth 163 mm

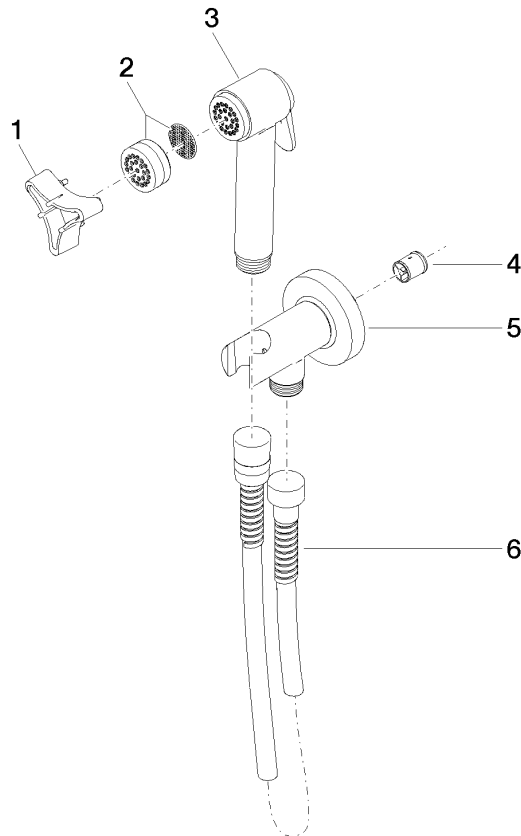


mm [inches]



Flow rate chart





Spare parts list

| No. | Item Number | Name | Quantity used | Delivery time |
|--|----------------------|---------------------|---------------|---------------|
| | 5 90 11 03 001 00-42 | connection | 1.00 | 30 |
| | 1 09 30 09 029 90 | key | 1.00 | 2 |
| | 4 09 23 01 097 90 | back-flow preventer | 1.00 | 2 |
| | 2 12 861 970-42 | accessories | 1.00 | - |
| Spare part can no longer be ordered, please order the replacement item | | | | |
| | 6 90 30 02 001 00-42 | hose | 1.00 | 30 |
| | 3 90 12 11 107 00-42 | shower | 1.00 | 30 |