

Hand shower set for bath rim or tile edge installation - Dark Chrome

SERIES SPECIFIC

27 702 980 Product version from 7/1/2022



- COMPACT RAIN, max. flow rate 8 l/min (at 3 bar)
- with anti-scale system
- rosette 60 x 60 mm
- hole diameter 32 mm
- metal shower hose 1750mm with integrated anti-twist protection

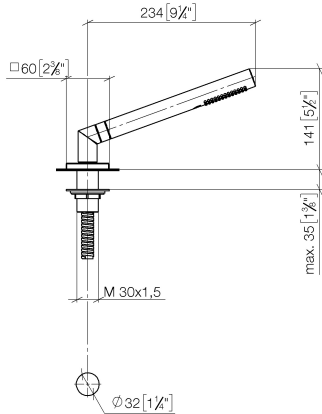
Two-piece design allows hose to later be changed without dismantling the fitting.

Intrinsic protection against back flow.

	Dark Chrome	27 702 980-19 0050
	Chrome	27 702 980-00 0050
	Brushed Platinum	27 702 980-06 0050
	Platinum	27 702 980-08 0050
	Brushed Light Gold	27 702 980-27 0050
	Brushed Durabrass (23kt Gold)	27 702 980-28 0050
	Matte Black	27 702 980-33 0050
	Brushed Champagne (22kt Gold)	27 702 980-46 0050
	Champagne (22kt Gold)	27 702 980-47 0050
	Brushed Chrome	27 702 980-93 0050
	Brushed Dark Platinum	27 702 980-99 0050

27 702 980 Product version from 7/1/2022

mm [inches]



Flow rate chart

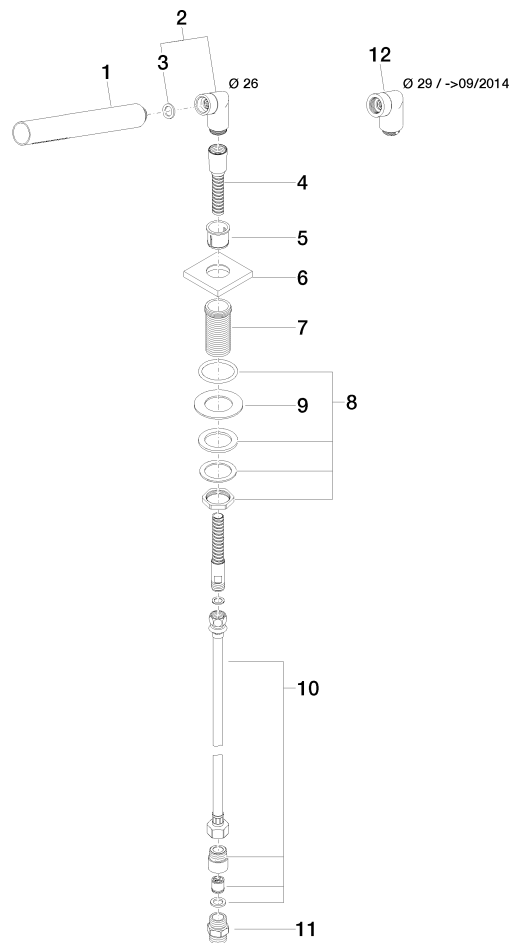


Hand shower set for bath rim or tile edge installation - Dark Chrome

SERIES SPECIFIC

27 702 980 Product version from 7/1/2022

Parts for other finishes can be found here: [Chrome](#)



Spare parts list

No.	Item Number	Name	Quantity used	Delivery time
6	09 27 68 003-19	rosette	1.00	60
8	04 23 10 032 46 90	fixing set	1.00	2
4	28 322 970-19	Metal shower hose 1/2" x 3/8" x 1750 mm - Dark Chrome	1.00	20
10	12 505 970 90	High pressure hose 1/2" x 3/8" x 500 mm -	1.00	2
7	09 30 01 090-07	sleeve	1.00	30
9	09 30 11 060 90	disc	1.00	2
2	04 24 04 287 00-19	nipple	1.00	20
5	90 18 40 085 00 90	sleeve	1.00	2
3	90 14 20 002 00 90	seal	1.00	2
12	04 24 04 187 00-19	nipple	1.00	-
Spare part can no longer be ordered, please order the replacement item				
11	90 24 03 168 00 90	nipple	1.00	2
1	90 12 11 140 41-19	shower	1.00	20