

Hand shower set for bath rim or tile edge installation - Brushed Durabrass (23kt SERIES SPECIFIC Gold)

27 702 980 Product version from 7/1/2022



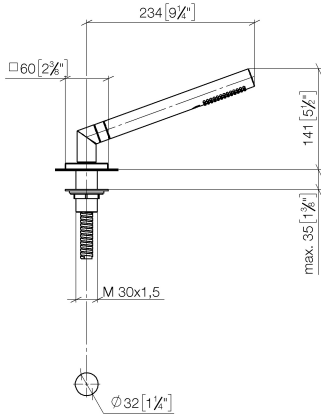
- COMPACT RAIN, max. flow rate 8 l/min (at 3 bar)
  - with anti-scale system
  - rosette 60 x 60 mm
  - hole diameter 32 mm
  - metal shower hose 1750mm with integrated anti-twist protection
- Two-piece design allows hose to later be changed without dismantling the fitting.
- Intrinsic protection against back flow.

	Brushed Durabrass (23kt Gold)	27 702 980-28 0050
	Chrome	27 702 980-00 0050
	Brushed Platinum	27 702 980-06 0050
	Platinum	27 702 980-08 0050
	Dark Chrome	27 702 980-19 0050
	Brushed Light Gold	27 702 980-27 0050
	Matte Black	27 702 980-33 0050
	Brushed Champagne (22kt Gold)	27 702 980-46 0050
	Champagne (22kt Gold)	27 702 980-47 0050
	Brushed Chrome	27 702 980-93 0050
	Brushed Dark Platinum	27 702 980-99 0050



Hand shower set for bath rim or tile edge installation - Brushed Durabron (23kt SERIES SPECIFIC Gold)

27 702 980 Product version from 7/1/2022  
mm [inches]



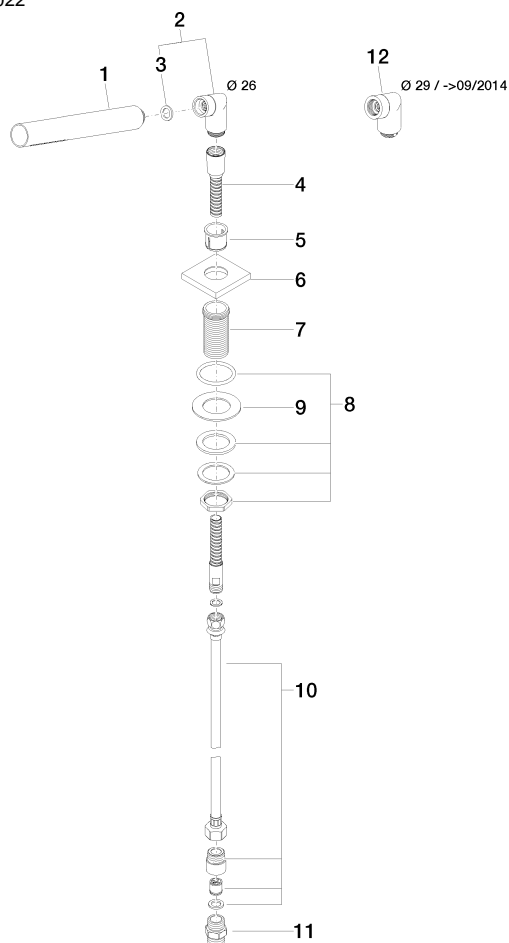
Flow rate chart



## Hand shower set for bath rim or tile edge installation - Brushed Durabronz (23kt SERIES SPECIFIC Gold)

27 702 980 Product version from 7/1/2022

Parts for other  
finishes can be found  
here: Chrome



### Spare parts list

No.	Item Number	Name	Quantity used	Delivery time
10	12 505 970 90	High pressure hose 1/2" x 3/8" x 500 mm -	1.00	2
12	04 24 04 187 00-28	nipple	1.00	20
2	04 24 04 287 00-28	nipple	1.00	20
6	09 27 68 003-28	rosette	1.00	20
8	04 23 10 032 46 90	fixing set	1.00	2
9	09 30 11 060 90	disc	1.00	2
4	28 322 970-28	Metal shower hose 1/2" x 3/8" x 1750 mm - Brushed Durabronz (23kt Gold)	1.00	20
7	09 30 01 090-07	sleeve	1.00	30
5	90 18 40 085 00 90	sleeve	1.00	2
3	90 14 20 002 00 90	seal	1.00	2
11	90 24 03 168 00 90	nipple	1.00	2
1	90 12 11 140 41-28	shower	1.00	20