

Profi spray set - Dark Chrome

SERIES-VARIOUS

27 799 970 Product version from 10/1/2024










- spray flow
- automatic diverter for spout/Profi spray set
- height of mixer 665 mm
- individual rosette diameter 55mm
- profi spray hole diameter 30mm
- sprayface with anti-scaling system
- lead-free

Can only be combined with 32815682, 33826861, 32815861, 33836888, 32816888, 20816892, 33836875, 32815875.

Intrinsic protection against back flow.

Operating unit can be positioned freely.

	Dark Chrome	27 799 970-19
	Chrome	27 799 970-00
	Brushed Platinum	27 799 970-06
	Platinum	27 799 970-08
	Brushed Bronze	27 799 970-42
	Brushed Chrome	27 799 970-93
	Brushed Dark Platinum	27 799 970-99

27 799 970 Product version from 10/1/2024

mm [inches]
1:10



Flow rate chart



Codes & Standards

DIN 4109

EN 1717

ISO 3822

NSF372

NSF61

Ü-Zeichen



Profi spray set - Dark Chrome

SERIES-VARIOUS

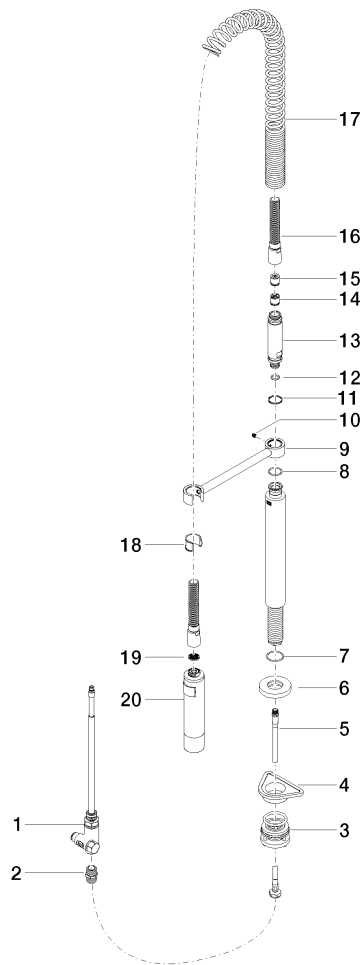
27 799 970 Product version from 10/1/2024

Certificates and sustainability

IAPMO_6397 LGA_38 Belgaqua_24-005-2 IAPMO_N-4976

27 799 970 Product version from 10/1/2024

Parts for other
finishes can be found
here: [Chrome](#)





Profi spray set - Dark Chrome

SERIES-VARIOUS

27 799 970 Product version from 10/1/2024

Spare parts list

No.	Item Number	Name	Quantity used	Delivery time
	7 09 14 10 120 90	seal	1.00	2
	15 09 23 01 046 90	back-flow preventer	1.00	2
	5 04 30 04 104 00 90	hose	1.00	2
	11 09 14 15 012 90	ring	1.00	2
	14 90 23 01 141 00 90	back-flow preventer	1.00	2
	10 09 31 11 049 90	pin	1.00	2
	13 09 30 01 067 10-19	adaptor	1.00	60
	17 09 16 02 034 90	spring	1.00	2
	6 90 27 86 000 00-19	rosette	1.00	-
Spare part can no longer be ordered, please order the replacement item				
	18 90 18 40 035 00 90	sleeve	1.00	2
	4 09 18 40 090 90	sleeve	1.00	2
	8 09 14 10 031 90	seal	1.00	2
	9 04 17 20 014 00-19	holder	1.00	60
	2 90 24 03 250 00 90	nipple	1.00	2
	16 90 30 02 065 00-19	hose	1.00	20
	1 90 17 09 046 12 90	diverter	1.00	2
	3 04 23 10 004 03 90	fixing set	1.00	2
	12 09 14 10 003 90	seal	1.00	2
	20 04 12 11 094 10-19	shower	1.00	60
	19 09 23 01 039 90	sieve	1.00	2