

Hand shower set with integrated shower holder - Brushed Chrome

27 802 660 Product version from 7/1/2022



- COMPACT RAIN, max. flow rate 8 l/min (at 3 bar)
- with anti-scale system
- 3/8" shower outlet
- metal shower hose 1250mm with integrated anti-twist protection
- rosette Ø 60 mm
- 1/2" connection
- This product can help a building meet the requirements of Green Building Rating Systems, e.g. LEED®, BREEAM®, DGNB

Intrinsic protection against back flow.

	Brushed Chrome	27 802 660-93 0050
	Chrome	27 802 660-00 0050
	Brushed Platinum	27 802 660-06 0050
	Platinum	27 802 660-08 0050
	Dark Chrome	27 802 660-19 0050
	Light Gold	27 802 660-26 0050
	Brushed Light Gold	27 802 660-27 0050
	Brushed Durabronze (23kt Gold)	27 802 660-28 0050
	Matte Black	27 802 660-33 0050
	Brushed Bronze	27 802 660-42 0050
	Brushed Champagne (22kt Gold)	27 802 660-46 0050
	Champagne (22kt Gold)	27 802 660-47 0050
	Brushed Dark Platinum	27 802 660-99 0050

Recommended miscellaneous

Concealed wall elbow -

35 085 970 90

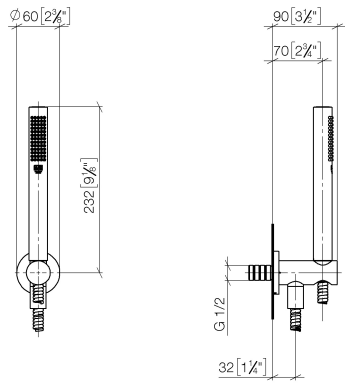


- max. recess depth mm
- min. recess depth mm

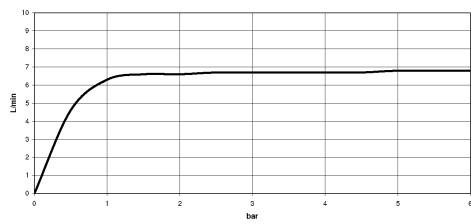
Hand shower set with integrated shower holder - Brushed Chrome

27 802 660 Product version from 7/1/2022

mm [inches]

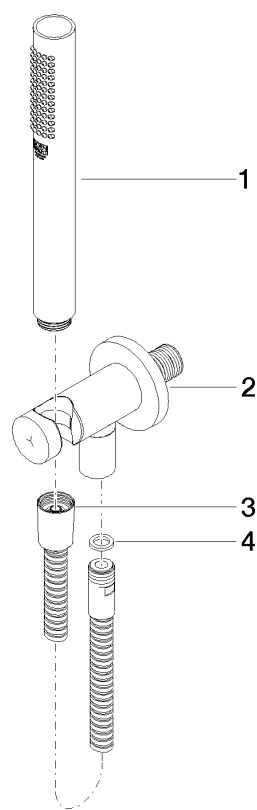


Flow rate chart



Hand shower set with integrated shower holder - Brushed Chrome

27 802 660 Product version from 7/1/2022



Spare parts list

No.	Item Number	Name	Quantity used	Delivery time
1	90 12 11 140 30-93	shower	1	60
2	28 490 660-93	Wall elbow with integrated shower holder - Brushed Chrome	1	20
3	90 30 02 072 00-93	Metal shower hose 1/2" x 3/8" x 1250 mm - Brushed Chrome	1	20
4	90 14 20 026 00 90	seal	1	2