

Hand shower set with cover plate - Brushed Platinum

SERIES SPECIFIC

27 818 980 Product version from 7/1/2022



- COMPACT RAIN, max. flow rate 8 l/min (at 3 bar)
- with anti-scale system
- 3/8" shower outlet
- cover plate 240 x 60 mm
- metal shower hose 1250mm with integrated anti-twist protection
- 1/2" wall elbow
- This product can help a building meet the requirements of Green Building Rating Systems, e.g. LEED®, BREEAM®, DGNB

Intrinsic protection against back flow.

	Brushed Platinum	27 818 980-06 0050
	Chrome	27 818 980-00 0050
	Platinum	27 818 980-08 0050
	Dark Chrome	27 818 980-19 0050
	Brushed Light Gold	27 818 980-27 0050
	Brushed Durabrass (23kt Gold)	27 818 980-28 0050
	Matte Black	27 818 980-33 0050
	Brushed Champagne (22kt Gold)	27 818 980-46 0050
	Champagne (22kt Gold)	27 818 980-47 0050
	Brushed Chrome	27 818 980-93 0050
	Brushed Dark Platinum	27 818 980-99 0050

Recommended miscellaneous

- Concealed wall elbow -** 35 085 970 90
- max. recess depth 163 mm
 - min. recess depth 90 mm

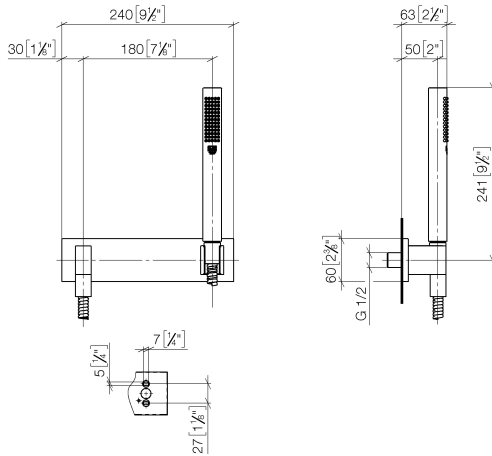


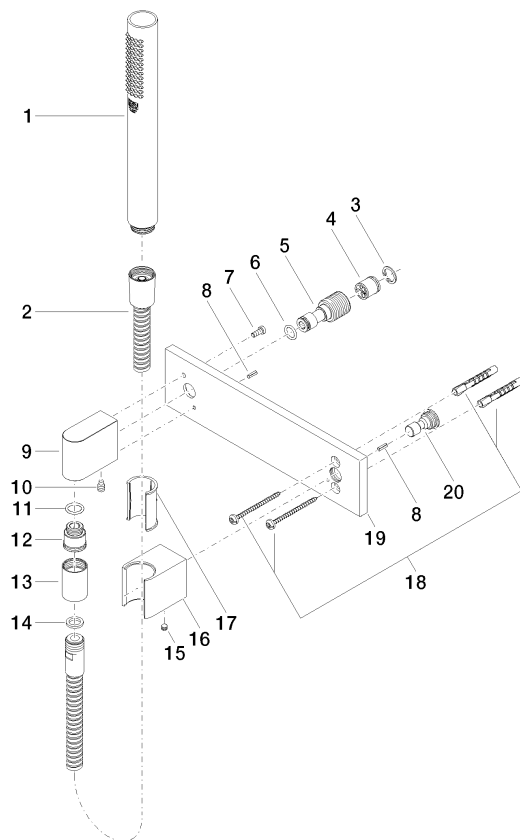
Hand shower set with cover plate - Brushed Platinum

SERIES SPECIFIC

27 818 980 Product version from 7/1/2022

mm [inches]





Spare parts list

No.	Item Number	Name	Quantity used	Delivery time
17	09 18 40 078 90	sleeve	1.00	2
5	09 24 03 116 20 90	nipple	1.00	2
3	09 16 01 014 90	ring	1.00	2
16	09 17 20 044-06	holder	1.00	10
6	09 14 10 008 90	seal	1.00	2
2	90 30 02 072 00-06	Metal shower hose 1/2" x 3/8" x 1250 mm - Brushed Platinum	1.00	10
19	09 11 02 120-06	plate	1.00	10
8	09 31 11 026 90	pin	2.00	2
10	04 31 11 140 00 90	pin	1.00	2
7	09 30 30 054 90	screw	1.00	2
9	09 11 03 046-06	connection	1.00	10
12	09 24 03 107 20 90	nipple	1.00	2
18	05 30 31 025 00 90	fixing set	1.00	2
20	09 24 03 073 90	nipple	1.00	2
11	90 14 10 077 00 90	seal	1.00	2
13	90 21 02 069 00-06	cover	1.00	10
15	90 31 11 112 00 90	pin	1.00	2
14	90 14 20 026 00 90	seal	1.00	2
4	90 23 01 141 00 90	back-flow preventer	1.00	2
1	90 12 11 140 41-06	shower	1.00	10