

MADISON Metal hand shower with porcelain insert (white) - Chrome

MADISON

28 002 970 Product version from 7/1/2022



- spray head Ø 64mm
- COMPACT RAIN, max. flow rate 6.8 l/min (at 3 bar)
- 1/2" connection

Notes:

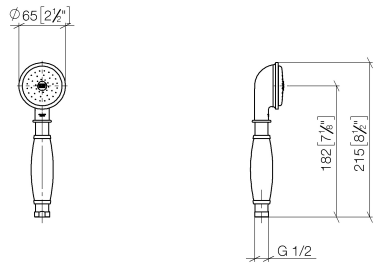
- This product can help a building meet the requirements of Green Building Rating Systems, e.g. LEED®, BREEAM®, DGNB

Intrinsic protection against back flow.

| | | |
|---|-------------------------------|--------------------|
|  | Chrome | 28 002 970-00 0050 |
|  | Brushed Platinum | 28 002 970-06 0050 |
|  | Platinum | 28 002 970-08 0050 |
|  | Durabrand (23kt Gold) | 28 002 970-09 0050 |
|  | Brushed Durabrand (23kt Gold) | 28 002 970-28 0050 |
|  | Brushed Dark Brass | 28 002 970-39 0050 |
|  | Brushed Chrome | 28 002 970-93 0050 |
|  | Brushed Dark Platinum | 28 002 970-99 0050 |

28 002 970 Product version from 7/1/2022

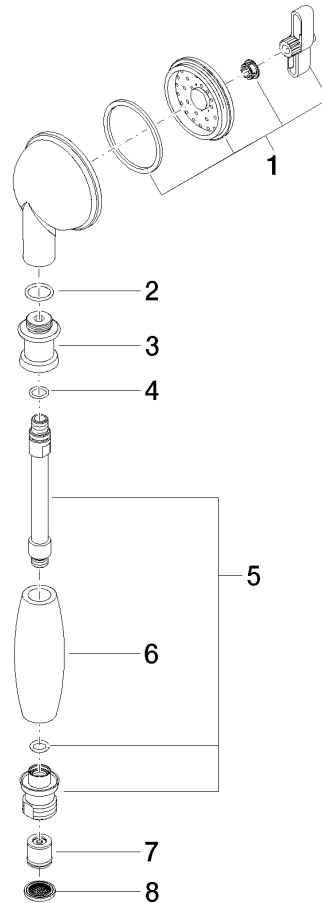
mm [inches]



Flow rate chart



Parts for other
finishes can be found
here: Brushed
Platinum



Spare parts list

| No. | Item Number | Name | Quantity used | Delivery time |
|-----|--------------------|--------------|---------------|---------------|
| 6 | 11 167 820 60 | handle | 1.00 | 2 |
| 1 | 90 12 01 010 00 90 | set | 1.00 | 2 |
| 3 | 09 24 04 059 20-00 | nipple | 1.00 | 10 |
| 5 | 90 28 22 033 00-00 | insert | 1.00 | 10 |
| 4 | 09 14 10 042 90 | seal | 1.00 | 2 |
| 2 | 09 14 10 069 90 | seal | 1.00 | 2 |
| 7 | 09 23 01 077 90 | flow reducer | 1.00 | 2 |
| 8 | 09 23 01 039 90 | sieve | 1.00 | 2 |