






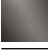
MADISON Metal hand shower with porcelain insert (white) - Durabrand (23kt Gold)

MADISON

28 002 970



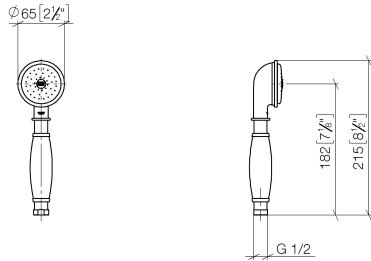
- COMPACT RAIN, max. flow rate 6.8 l/min (at 3 bar)
 - spray head Ø 64mm
 - 1/2" connection
 - This product can help a building meet the requirements of Green Building Rating Systems, e.g. LEED®, BREEAM®, DGNB
- Intrinsic protection against back flow.

	Durabrand (23kt Gold)	28 002 970-09 0050
	Chrome	28 002 970-00 0050
	Brushed Platinum	28 002 970-06 0050
	Platinum	28 002 970-08 0050
	Brushed Durabrand (23kt Gold)	28 002 970-28 0050
	Brushed Chrome	28 002 970-93 0050
	Brushed Dark Platinum	28 002 970-99 0050

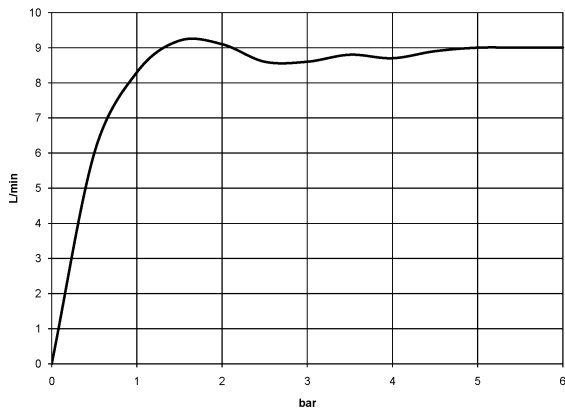
MADISON Metal hand shower with porcelain insert (white) - Durabrand (23kt Gold)

MADISON

28 002 970
mm [inches]



Flow rate chart



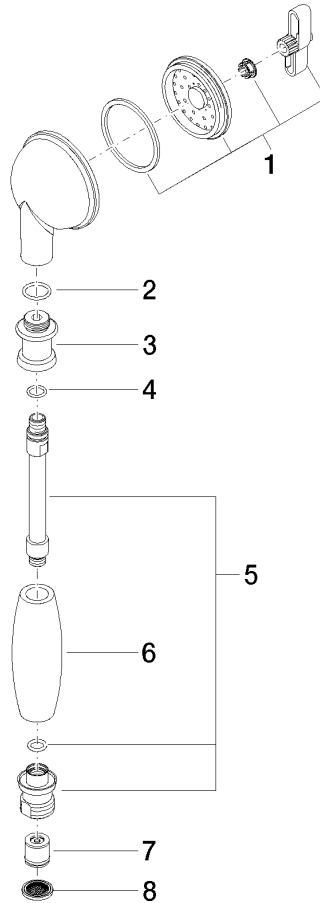
MADISON Metal hand shower with porcelain insert (white) - Durabrand (23kt Gold)

MADISON

28 002 970

Product version from 7/1/2022

Parts for other
finishes can be found
here: [Chrome](#)





MADISON Metal hand shower with porcelain insert (white) - Durabrass (23kt Gold)

MADISON

28 002 970

Spare parts list

Product version from 7/1/2022

No.	Item Number	Name	Quantity used	Delivery time
	90 12 01 010 00 90	set	8	2