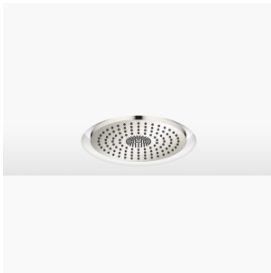


Rain shower for recessed ceiling installation with light 300 mm - Platinum

SERIES SPECIFIC

28 034 970 Product version from 7/1/2022



- rain shower Ø 300 mm
- PURE RAIN, max. flow rate 6.8 l/min (at 3 bar)
- PURIFY RAIN, max. flow rate 6.8 l/min (at 3 bar)
- with anti-scale system

Technical data:

- min. recess depth 137 mm

Ceiling module power supply

- 12V DC (CV)

electrical:

Ambient lighting

Spot lighting

- LED coloured light RGBW
- LED coloured light RGBW

Activation

- ZigBee Light Link RGBW controller
- Provided by customer: Zigbee gateway
- Bulbs protected against splashing water




Environment

Planning tips:

- Not suitable for outdoor use.
- Not suitable for use in a steam room.
- Not suitable for use in chlorinated or salty environments.
- Comply with the protection zone regulations as defined in DIN VDE 0100, Part 701 (IEC 60364-7-701).
- Dornbracht recommends consulting a systems integrator.
- WRAS

Three-way diverter trim is sold separately

Three-way diverter trim is sold separately

	Platinum	28 034 970-08 0050
	Chrome	28 034 970-00 0050
	Brushed Platinum	28 034 970-06 0050
	Dark Chrome	28 034 970-19 0050
	Light Gold	28 034 970-26 0050
	Brushed Light Gold	28 034 970-27 0050
	Brushed Durabronze (23kt Gold)	28 034 970-28 0050
	Matte Black	28 034 970-33 0050
	Brushed Dark Brass	28 034 970-39 0050
	Brushed Bronze	28 034 970-42 0050
	Brushed Champagne (22kt Gold)	28 034 970-46 0050
	Champagne (22kt Gold)	28 034 970-47 0050
	Brushed Chrome	28 034 970-93 0050
	Brushed Dark Platinum	28 034 970-99 0050

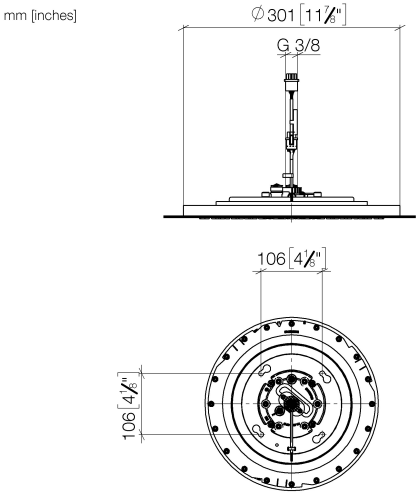
Required miscellaneous



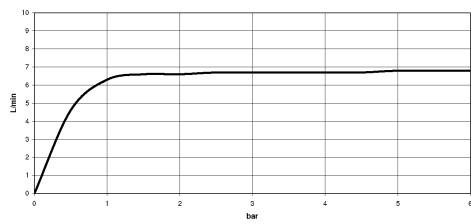
Concealed ceiling installation box for recessed ceiling installation with light -

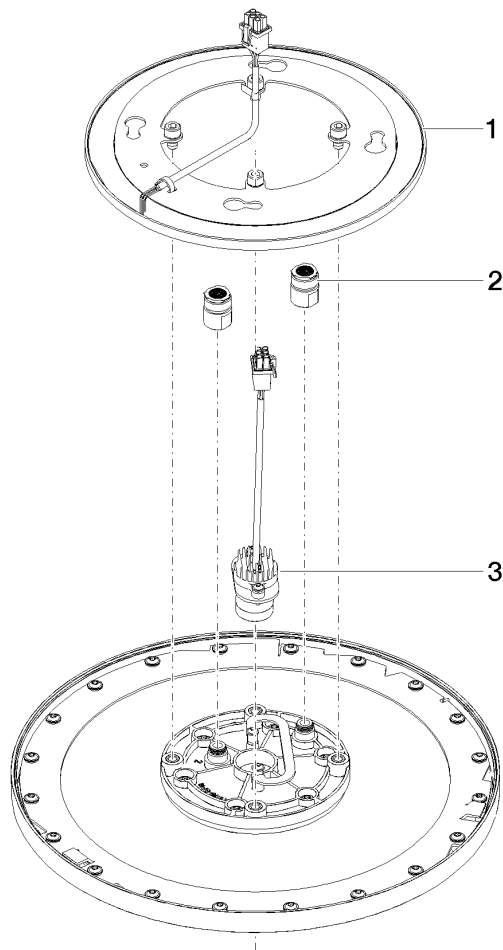
- flush-mounted reflection box Ø 360 mm RAL 9003 signal white
- recess depth 137mm
- 2x female thread 1/2" outlet
- concealed rough parts
- Input 100-240V AC 50-60Hz
- Output 12V DC SELV / Class 2
- ZigBee Light Link RGBW controller

28 034 970 Product version from 7/1/2022



Flow rate chart





Spare parts list

No.	Item Number	Name	Quantity used	Delivery time
2	90 24 03 309 02 90	connection	1.00	2
3	90 10 01 225 00 90	electronic accessories	1.00	2
1	90 10 01 221 00 90	electronic accessories	1.00	2